



Chipsmall Limited consists of a professional team with an average of over 10 year of expertise in the distribution of electronic components. Based in Hongkong, we have already established firm and mutual-benefit business relationships with customers from,Europe,America and south Asia,supplying obsolete and hard-to-find components to meet their specific needs.

With the principle of “Quality Parts,Customers Priority,Honest Operation,and Considerate Service”,our business mainly focus on the distribution of electronic components. Line cards we deal with include Microchip,ALPS,ROHM,Xilinx,Pulse,ON,Everlight and Freescale. Main products comprise IC,Modules,Potentiometer,IC Socket,Relay,Connector.Our parts cover such applications as commercial,industrial, and automotives areas.

We are looking forward to setting up business relationship with you and hope to provide you with the best service and solution. Let us make a better world for our industry!



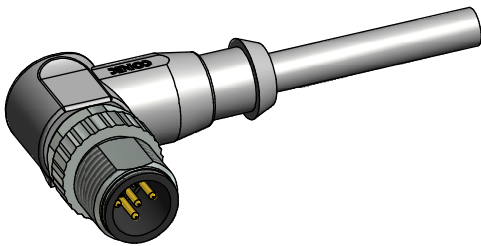
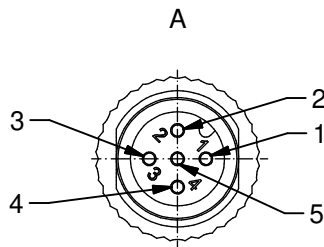
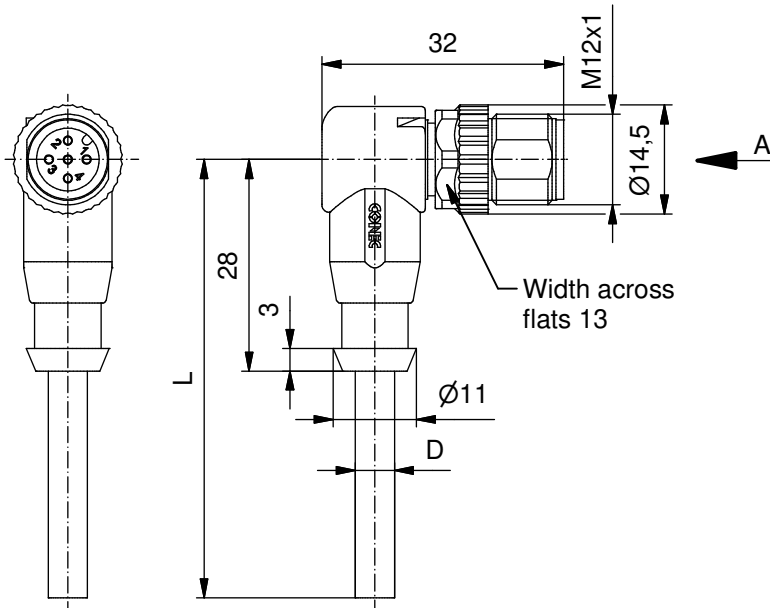
## Contact us

Tel: +86-755-8981 8866 Fax: +86-755-8427 6832

Email & Skype: [info@chipsmall.com](mailto:info@chipsmall.com) Web: [www.chipsmall.com](http://www.chipsmall.com)

Address: A1208, Overseas Decoration Building, #122 Zhenhua RD., Futian, Shenzhen, China





D see data sheet cable

#### Technical specification:

Rated voltage: IEC 61076-2-101	5pos 60 V
Current rating: IEC 61076-2-101	4 A at 40°C
Insulation resistance: IEC 60512	$\geq 100 \text{ M}\Omega$
Pollution degree: IEC 60664-1	3/2
Degree of protection: IEC 60529	IP 67, in mated condition
Temperature range: IEC 60664-1	-30°C ... +80°C
Mating cycles: IEC 60512-9a	$\geq 100$

#### Materials:

Contact:	CuZn
Contact plating:	Nickel, gold plated
Contact carrier:	TPU GF, UL 94
Coupling screw:	GD-Zn, nickel plated
Moulding body:	TPU, UL 94, grey

#### Installation specification:

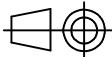

Recommended torque:	0,6 Nm
Conec installation tool:	Torque wrench: 36-000200 Insert across flats 13: 36-000220

#### Contact assignment:

1	■	brown
2	■	white
3	■	blue
4	■	black
5	■	green-yellow

Part no:	Description:	Length L:	Cable:
43-14448	SAL - 12 - RSW5 - 2 / A1 / A1090	2m	PVC, grey, 5x0,34mm <sup>2</sup> Cable: 781-A13500
43-14449	SAL - 12 - RSW5 - 3 / A1 / A1090	3m	
43-14450	SAL - 12 - RSW5 - 5 / A1 / A1090	5m	
43-14451	SAL - 12 - RSW5 - 10 / A1 / A1090	10m	
43-xxxxx	SAL - 12 - RSW5 - ... / A1 / A1090	x	

DO NOT ALTER CAD DRAWING BY HAND  
Directive 2002/95/EC RoHS compliant

		 dim. in mm		title:  Male connector M12x1 angled	
tolerance of cable:	L <= 4m: L + 40mm L > 4m: L + 1%	drawn	15.11.10	Franz	dwg no:  43K1A1236
		appd.	15.11.10	Mankopf	
general tolerance:	0 ± 0,50mm 0,0 ± 0,25mm 0,00 ± 0,10mm				part no:  see table
	THIS DRAWING MAY NOT BE COPIED OR REPRODUCED IN ANY WAY, AND MAY NOT BE PASSED ON TO A THIRD PARTY WITHOUT WRITTEN PERMISSION. OWNERSHIP AND COPYRIGHT OF CONEC GmbH				