



Chipsmall Limited consists of a professional team with an average of over 10 year of expertise in the distribution of electronic components. Based in Hongkong, we have already established firm and mutual-benefit business relationships with customers from,Europe,America and south Asia,supplying obsolete and hard-to-find components to meet their specific needs.

With the principle of “Quality Parts,Customers Priority,Honest Operation,and Considerate Service”,our business mainly focus on the distribution of electronic components. Line cards we deal with include Microchip,ALPS,ROHM,Xilinx,Pulse,ON,Everlight and Freescale. Main products comprise IC,Modules,Potentiometer,IC Socket,Relay,Connector.Our parts cover such applications as commercial,industrial, and automotives areas.

We are looking forward to setting up business relationship with you and hope to provide you with the best service and solution. Let us make a better world for our industry!



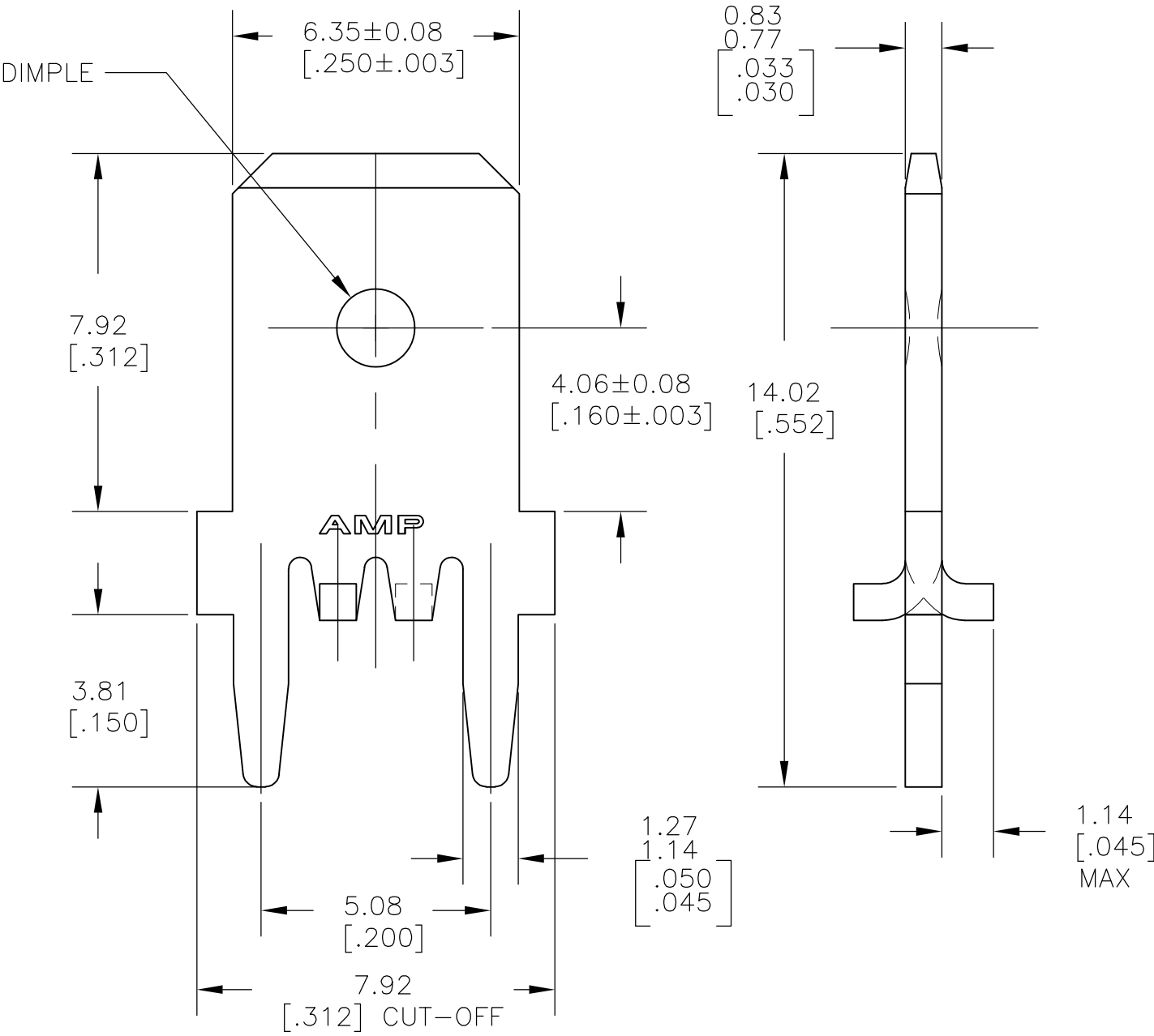
Contact us

Tel: +86-755-8981 8866 Fax: +86-755-8427 6832

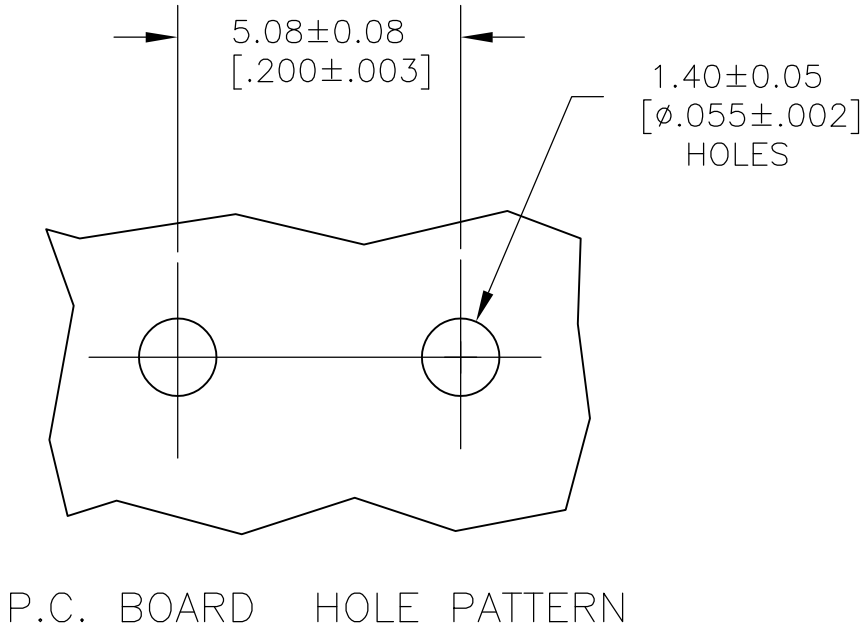
Email & Skype: info@chipsmall.com Web: www.chipsmall.com

Address: A1208, Overseas Decoration Building, #122 Zhenhua RD., Futian, Shenzhen, China




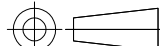



- 1 CONTINUOUS STRIP ON REELS.
- 2 TIN PLATE 0.00381 [$.000150$] MIN OVER 0.00127 [$.000050$] MIN THK NICKEL.



63862-1

PART NO.

THIS DRAWING IS A CONTROLLED DOCUMENT.		DWN JR RUTH	20FEB01	 TE Connectivity			
		CHK MS FEHER	20FEB01				
DIMENSIONS: mm[INCHES]	TOLERANCES UNLESS OTHERWISE SPECIFIED:	APVD N DEIBERT	20FEB01	NAME TAB, FASTON, P.C.BOARD 6.35 [.250] —			
	0 PLC ± — 1 PLC ± — 2 PLC ± 0.25 [.010] 3 PLC ± — 4 PLC ± — ANGLES ± —	PRODUCT SPEC —					
	APPLICATION SPEC 114-2115						
MATERIAL 082 BRASS	FINISH 	WEIGHT —	SIZE A3		CAGE CODE 00779	DRAWING NO C-63862	RESTRICTED TO —
CUSTOMER DRAWING			SCALE 8:1		SHEET 1 of 1		REV G3