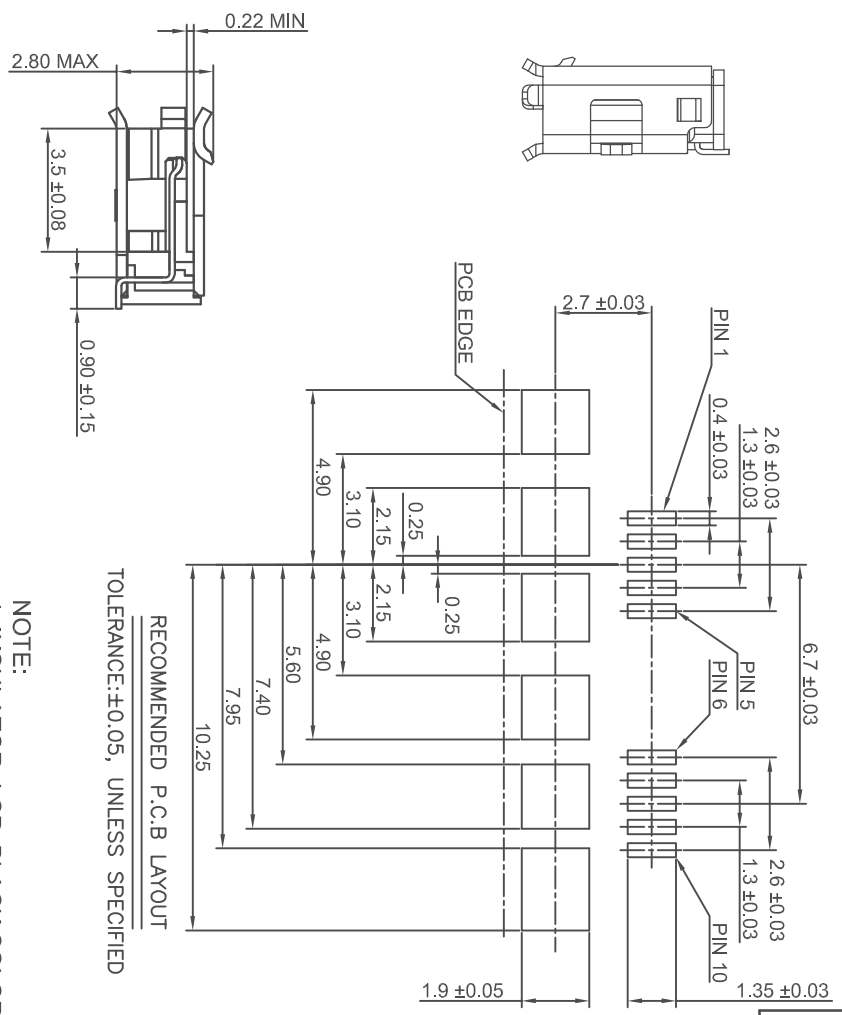
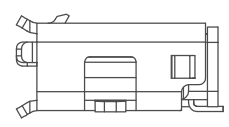
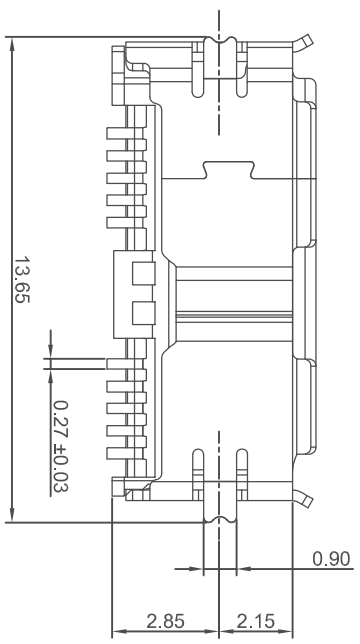
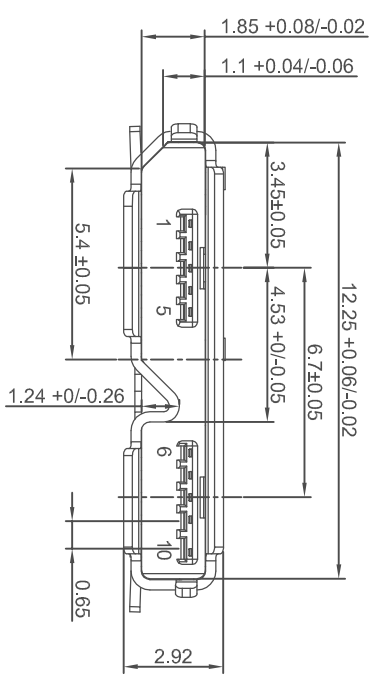
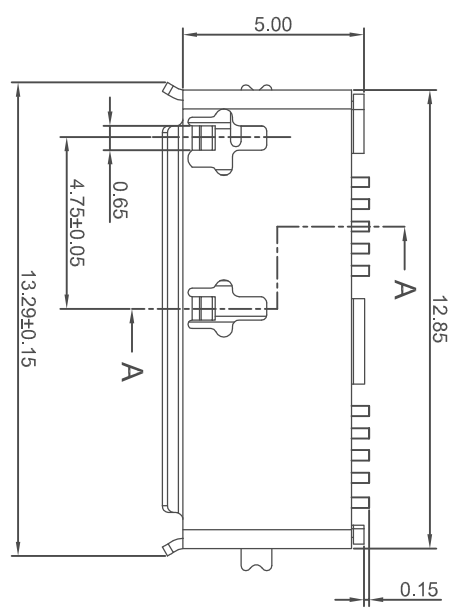




ISSUE NUMBER	1
ORIGINAL	
ADD 300" GOLD PLATING	
R.STA.MONICA JUN.18/10	
TIN PLATING WAS GOLD	
FLASH ON SOLDER TAIL	
NICKEL PLATING WAS GOLD	
FLASH ON SHELL TAB	
R.STA.MONICA DEC.4/2013	



RECOMMENDED P.C.B LAYOUT
TOLERANCE: ±0.05, UNLESS SPECIFIED

A-A

- NOTE:
1. INSULATOR: LCP, BLACK COLOR
 2. USB CONTACT: BRASS 0.15MM THICK, 30U" GOLD PLATING ON CONTACT AREA, AND TIN PLATED ON SOLDER TAIL, WITH 80U" MIN. NICKEL UNDERPLATING OVERALL
 3. SHELL: STAINLESS STEEL, 0.3MM THICK, WITH 80U" MIN. NICKEL PLATING OVERALL
 4. ALL CONNECTOR DIMENSION TOLERANCE: ±0.2, UNLESS OTHERWISE SPECIFIED

ELECTRICAL SPECIFICATIONS:
CURRENT RATING: 0.25 AMP MIN.
CONTACT RESISTANCE: 30 MILLIOHMS MAX.
INSULATION RESISTANCE: 100 MEGOHMS MIN.
DWV: 100 VAC
TEMPERATURE RANGE: -20°C TO +85°C

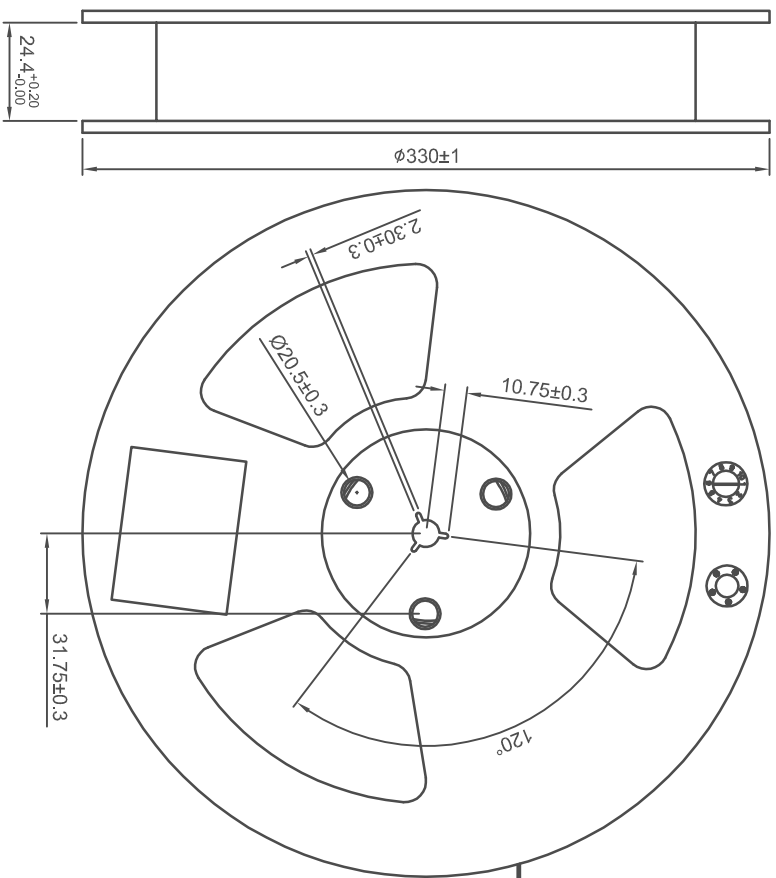
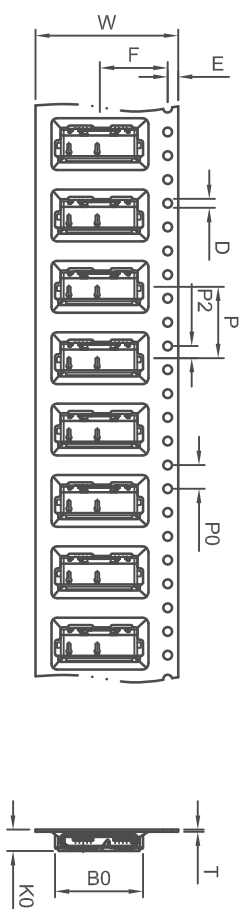
MICRO USB 3.0-B SMT TYPE

EDAC INC TORONTO, ONTARIO CANADA		THESE DRAWINGS AND SPECIFICATIONS ARE THE PROPERTY OF EDAC INC. AND SHALL NOT BE REPRODUCED, COPIED OR USED AS THE BASIS FOR THE MANUFACTURE OR SALE OF APPARATUS WITHOUT WRITTEN PERMISSION.	
YOUR CONNECTION TO QUALITY & SERVICE		ACAD REFERENCE NO. 690-010-295-484	DATE: JUN.8/2010
MICRO USB 3.0-B SMT TYPE		CHECKED:	DATE:
SCALE: NOT TO SCALE		SHEET 1 OF 2	ISSUE 3
DRAWING NUMBER 690-010-295-484			



THIS SERIES FULLY CONFORMS TO THE EUROPEAN UNION DIRECTIVES 2002/95/EC AND 2002/96/EC FOR ROHS COMPLIANCY

THIS IS A C.A.D. GENERATED DRAWING
DO NOT MAKE MANUAL REVISIONS TO MASTER.



ITEM	W	F	P	P2	P0
DIM	24.0±0.3	11.4±0.1	12.0±0.1	2.03±0.1	4.0±0.1

ITEM	D	E	BO	KO	AO	T
DIM	1.5±0.1	1.75±0.1	14.80±0.1	3.6±0.1	6.2±0.1	0.35±0.05

NOTE:
1. TAPE MATERIAL: PS
2. TAPE LENGTH: 18.6 METERS
3. TOTAL 1500PCS PRODUCT SPACES (13" REEL)

**MICRO USB 3.0-B SMT TYPE
TAPE AND REEL PACKAGING**

		EDAC INC TORONTO, ONTARIO CANADA	
THESE DRAWINGS AND SPECIFICATIONS ARE THE PROPERTY OF EDAC INC. AND SHALL NOT BE REPRODUCED, OR COPIED OR USED AS THE BASIS FOR THE MANUFACTURE OR SALE OF APPARATUS WITHOUT WRITTEN PERMISSION.			
ACAD REFERENCE NO.	690-010-295-484	DRAWN BY:	R.STA.MONICA
CHECKED:		DATE:	JUN.10/2010
SCALE:	NOT TO SCALE	SHEET	2 OF 2
DRAWING NUMBER	690-010-295-484	ISSUE	3

YOUR CONNECTION TO QUALITY & SERVICE