



Chipsmall Limited consists of a professional team with an average of over 10 year of expertise in the distribution of electronic components. Based in Hongkong, we have already established firm and mutual-benefit business relationships with customers from,Europe,America and south Asia,supplying obsolete and hard-to-find components to meet their specific needs.

With the principle of “Quality Parts,Customers Priority,Honest Operation,and Considerate Service”,our business mainly focus on the distribution of electronic components. Line cards we deal with include Microchip,ALPS,ROHM,Xilinx,Pulse,ON,Everlight and Freescale. Main products comprise IC,Modules,Potentiometer,IC Socket,Relay,Connector.Our parts cover such applications as commercial,industrial, and automotives areas.

We are looking forward to setting up business relationship with you and hope to provide you with the best service and solution. Let us make a better world for our industry!



Contact us

Tel: +86-755-8981 8866 Fax: +86-755-8427 6832

Email & Skype: info@chipsmall.com Web: www.chipsmall.com

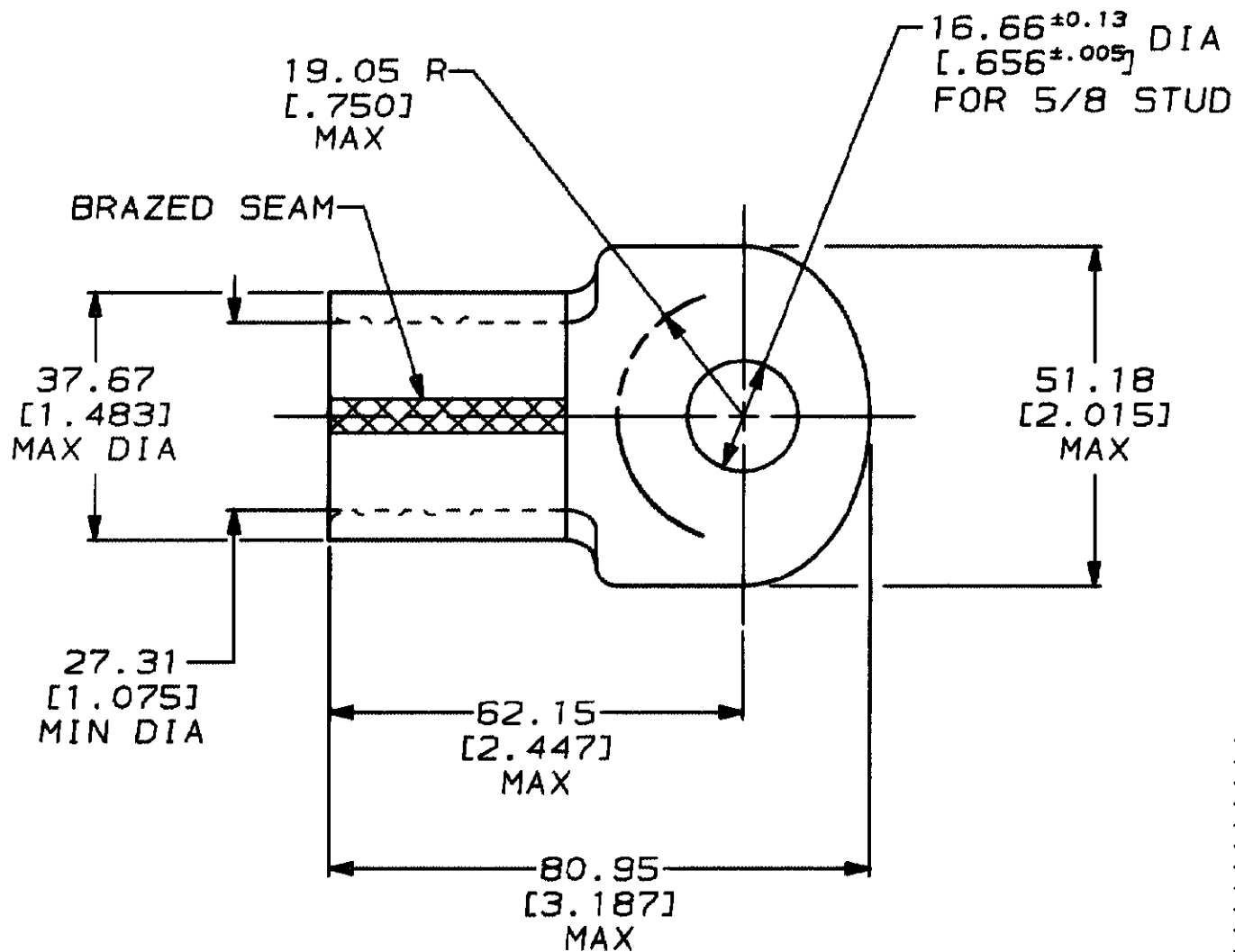
Address: A1208, Overseas Decoration Building, #122 Zhenhua RD., Futian, Shenzhen, China



DRAWING MADE IN THIRD ANGLE PROJECTION

THIS DRAWING IS A CONTROLLED DOCUMENT FOR AMP INCORPORATED.
IT IS SUBJECT TO CHANGE AND THE CONTROLLING ENGINEERING
ORGANIZATION SHOULD BE CONTACTED FOR THE LATEST REVISION.

LOC	DIST	REVISIONS				DATE	APPROVED
		P	F	LTR	DESCRIPTION		
G	14			D	REVISED & REDRAWN PER G-5803	6/12/92	DKS / AJK



THIS DRAWING IS UNPUBLISHED. RELEASED FOR PUBLICATION

© COPYRIGHT 19

BY AMP INCORPORATED. ALL INTERNATIONAL RIGHTS RESERVED.

DO NOT SCALE PRINT.
UNLESS SPECIFIED
DIMENSIONS IN mm (IN)
TOLERANCES ON:
2 PLC DEC ± 0.20 (0.008)
3 PLC DEC ± -
ANGLES ± -

MATERIAL

COPPER ASTM B-152
ANNEALEDFINISH TIN PLATE
0.00254 (0.000100) MIN
THK PER MIL-T-10727DR 6/12/92
DK SCHRUMCHK 6/26/92
RD HEIMAPPD 6/26/92
AJ KAUFMANAPPD 6/26/92
CR RHOADS

PRODUCT SPEC

APPLICATION SPEC

WEIGHT -

AMPAMP Incorporated
Harrisburg, PA 17105-3608

NAME

TERMINAL, RING TONGUE, SOLISTRAND™
WIRE SIZE: 253.0-304.0mm² [500-600] MCM

SIZE

A

CAGE CODE

00779

DRAWING NO

C-322270

SCALE

1:1

SHEET

1 OF 1

AMP 1469-32 REV 3-92

12 JUN 1992

14:23:08

AMP26463

<US128A>DEPT1123>DWG1123>U.SOLISTRAND>U.MCM

CUSTOMER DRAWING