



Chipsmall Limited consists of a professional team with an average of over 10 year of expertise in the distribution of electronic components. Based in Hongkong, we have already established firm and mutual-benefit business relationships with customers from,Europe,America and south Asia,supplying obsolete and hard-to-find components to meet their specific needs.

With the principle of “Quality Parts,Customers Priority,Honest Operation,and Considerate Service”,our business mainly focus on the distribution of electronic components. Line cards we deal with include Microchip,ALPS,ROHM,Xilinx,Pulse,ON,Everlight and Freescale. Main products comprise IC,Modules,Potentiometer,IC Socket,Relay,Connector.Our parts cover such applications as commercial,industrial, and automotives areas.

We are looking forward to setting up business relationship with you and hope to provide you with the best service and solution. Let us make a better world for our industry!



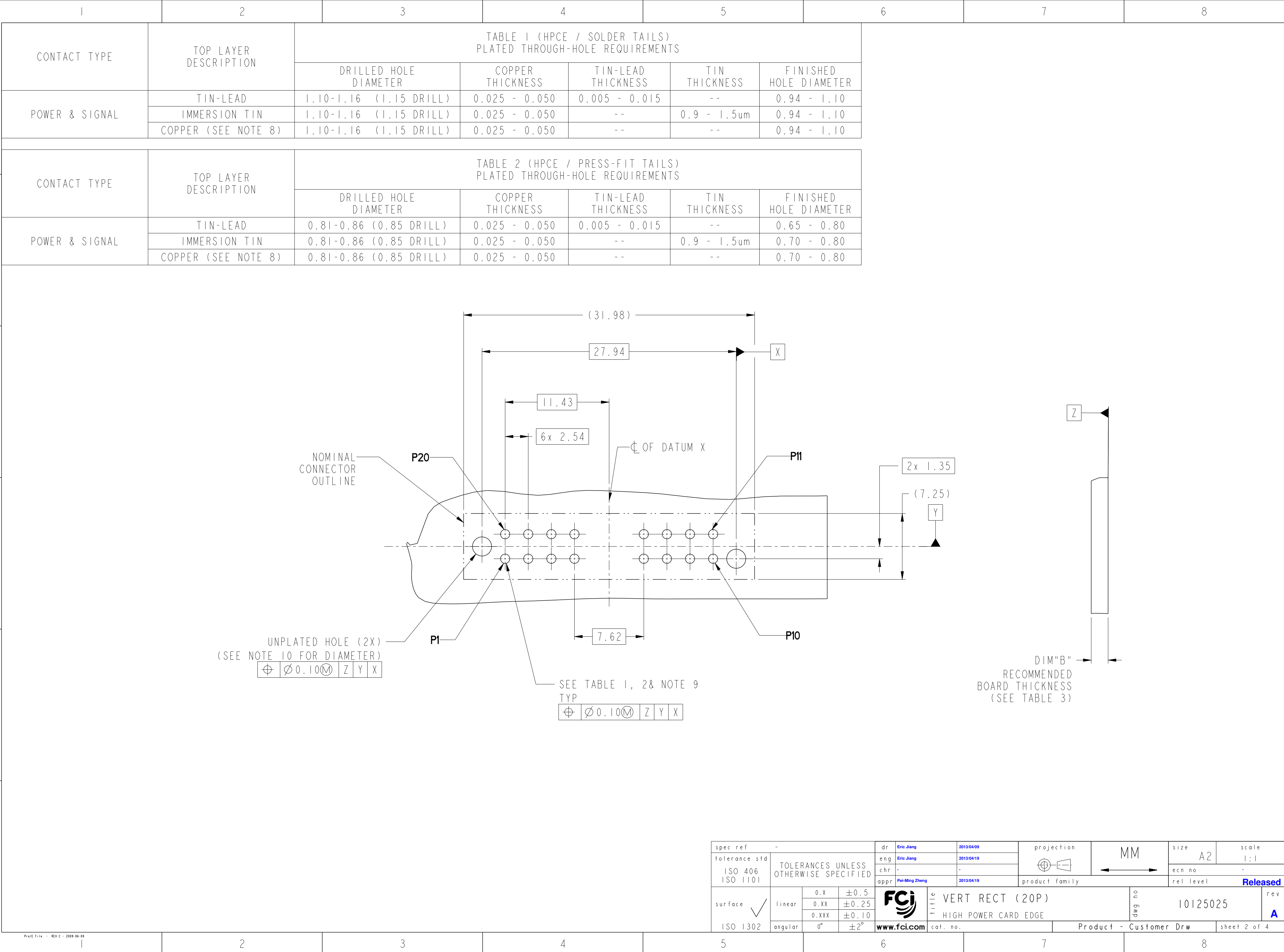
Contact us

Tel: +86-755-8981 8866 Fax: +86-755-8427 6832

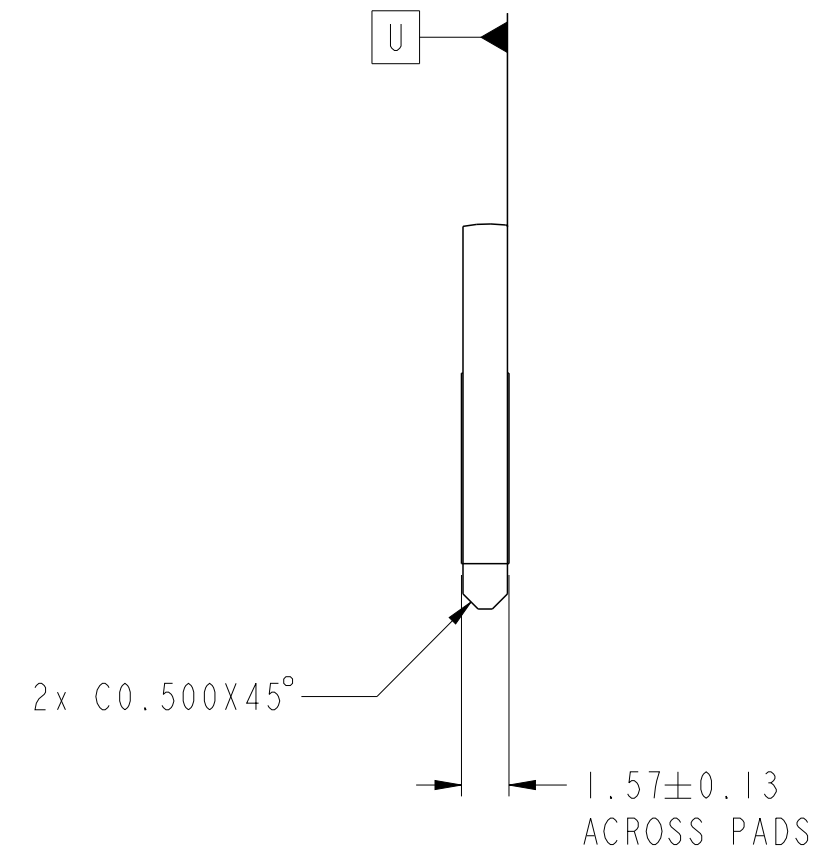
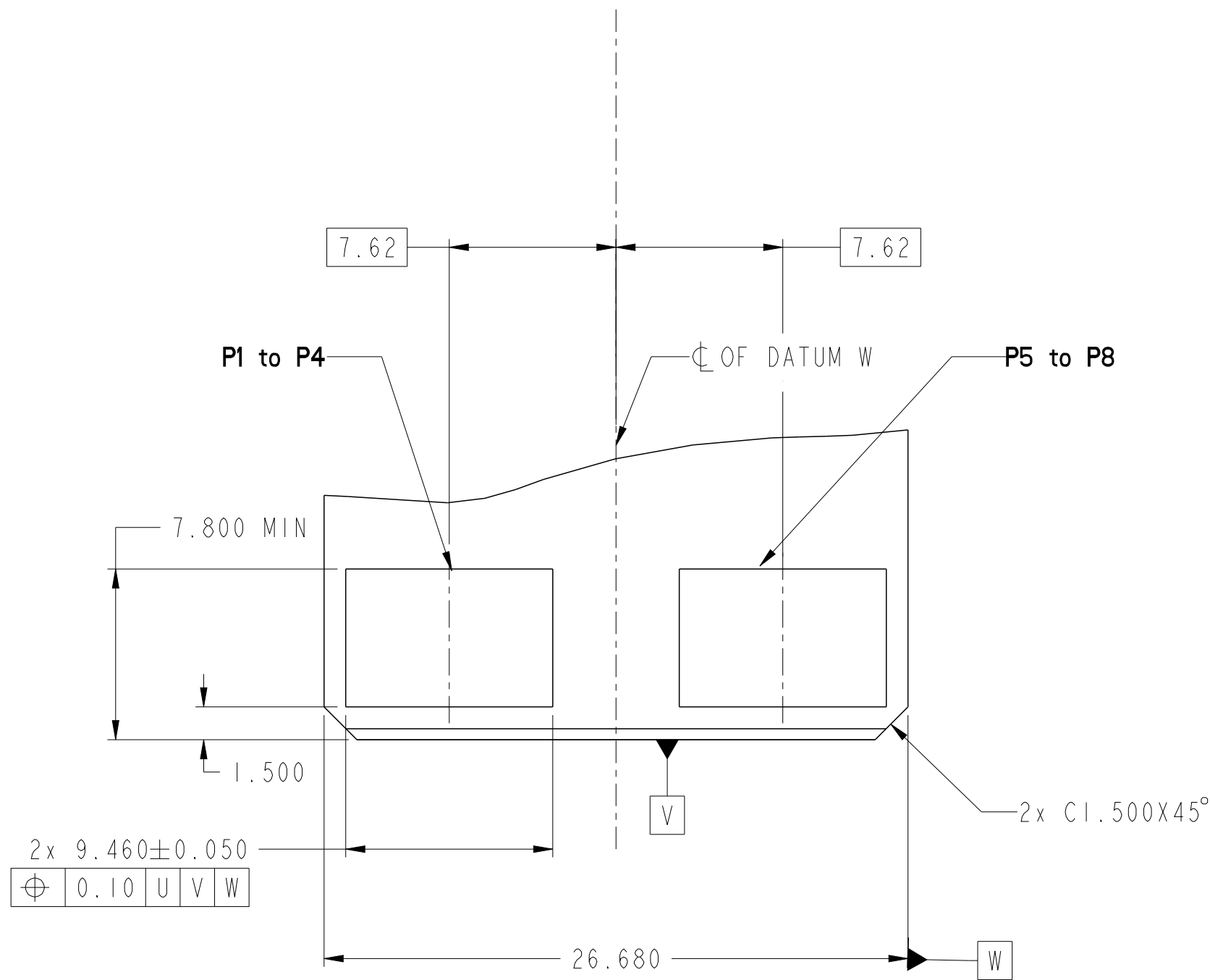
Email & Skype: info@chipsmall.com Web: www.chipsmall.com

Address: A1208, Overseas Decoration Building, #122 Zhenhua RD., Futian, Shenzhen, China

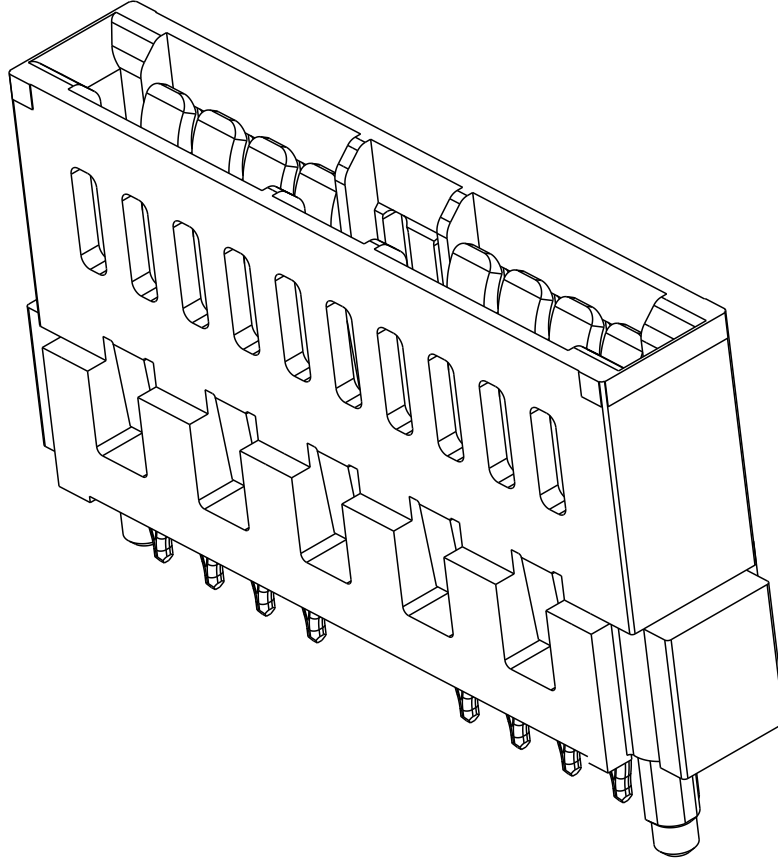
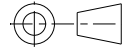





spec ref	-	dr	Eric Jiang	2013/04/09	projection	MM	size	A2	scale	1:1
tolerance std	ISO 406 ISO 1101	eng	Eric Jiang	2013/04/19	chr	-	ecn no	-	rel level	Released
surface	ISO 1302	appr	Pei-Ming Zheng	2013/04/19	product family	VERT RECT (20P) HIGH POWER CARD EDGE	dwg no	10125025	rev	A
		www.fci.com		cat. no.		Product - Customer Drw		sheet 2 of 4		



spec ref		-		dr		Eric Jiang		2013/04/09		projection		MM		size		A2		scale		1:1			
tolerance std		ISO 406 ISO 1101		eng		Eric Jiang		2013/04/19		chr		-		-		ecn no		-		rel level		Released	
appr		Pei-Ming Zheng		2013/04/19		product family																	
surface		ISO 1302		linear		0.X		±0.5		FCI		title		VERT RECT (20P)		dwg no		10125025		rev		A	
						0.XX		±0.25															
						0.XXX		±0.10															
				angular		0°		±2°		www.fci.com		cat. no.				Product - Customer Drw				sheet 3 of 4			

1	2	3	4	5	6	7	8									
HPCE PART NUMBER (TABLE 3)																
PART NUMBER	TAIL TYPE	ORIENTATION KEY	DIM "A" TAIL LENGTH	DIM "B" RECOMMENDED BOARD THICKNESS												
10125025-001LF	SOLDER	NO	3.17 ±0.25	1.59 - 2.38												
10125025-002LF	PRESS-FIT	NO	3.17 ±0.25	1.57 MIN												
<div>NOTES:</div> <div>1. CONNECTOR MATERIALS:<div>HOUSING: HIGH TEMPERATURE THERMAL PLASTIC, BLACK UL 94V-0 COMPLIANT</div><div>CONTACTS: HIGH PERFORMANCE COPPER ALLOY.</div></div> <div>2. CONTACT FINISH REF. GS-12-604 SECTION 5.2.</div> <div>3. PRODUCT SPECIFICATION: GS-12-604.</div> <div>4. APPLICATION SPECIFICATION: GS-20-128.</div> <div>5. PRODUCT MARKING (FCI - PART NUMBER & DATE CODE) ON HOUSING IN AREA SHOWN.</div> <div>6. PACKAGING MEETS FCI SPECIFICATION GS-14-937.</div> <div>7. HOUSING COMPONENT WILL WITHSTAND EXPOSURE TO 260°C PEAK TEMPERATURE FOR 60 SECONDS IN A CONVECTION, INFRA-RED, OR VAPOR PHASE REFLOW OVEN.</div> <div>8. COPPER PLATING THICKNESS IN CENTER OF VIA-HOLE CAN BE NO MORE THAN 0.003 LESS THAN OTHER AREAS.</div> <div>9. ALL HOLE SIZES ARE FINISHED HOLE SIZES.</div> <div>10. MOUNTING HOLES ARE UNPLATED Ø 2.40 +/- 0.1 FOR PRESS-FIT TAILS Ø 2.18 +/- 0.03 FOR SOLDER TAILS</div> <div>11. PRESS FIT APPLICATION TOOL DRAWING : 10119453.</div>																
								spec ref -				dr Eric Jiang	2013/04/09	projection	size A2	scale 1:1
								tolerance std ISO 406 ISO 1101 TOLERANCES UNLESS OTHERWISE SPECIFIED				eng Eric Jiang	2013/04/19		ecn no -	rel level Released
												chr -	-			
												appr Pei-Ming Zheng	2013/04/19			
								surface ISO 1302	linear	0.X	±0.5		title VERT RECT (20P) HIGH POWER CARD EDGE	dwg no 10125025	rev A	
										0.XX	±0.25					
										0.XXX	±0.10					
								angular	0°	±2°	www.fci.com	cat. no.	Product - Customer Drw		sheet 4 of 4	

Pro/E File - REV C - 2009-06-09

1

2

3

4

5

6

7

8