



Chipsmall Limited consists of a professional team with an average of over 10 year of expertise in the distribution of electronic components. Based in Hongkong, we have already established firm and mutual-benefit business relationships with customers from,Europe,America and south Asia,supplying obsolete and hard-to-find components to meet their specific needs.

With the principle of “Quality Parts,Customers Priority,Honest Operation,and Considerate Service”,our business mainly focus on the distribution of electronic components. Line cards we deal with include Microchip,ALPS,ROHM,Xilinx,Pulse,ON,Everlight and Freescale. Main products comprise IC,Modules,Potentiometer,IC Socket,Relay,Connector.Our parts cover such applications as commercial,industrial, and automotives areas.

We are looking forward to setting up business relationship with you and hope to provide you with the best service and solution. Let us make a better world for our industry!



Contact us

Tel: +86-755-8981 8866 Fax: +86-755-8427 6832

Email & Skype: info@chipsmall.com Web: www.chipsmall.com

Address: A1208, Overseas Decoration Building, #122 Zhenhua RD., Futian, Shenzhen, China



4

3

2

1

THIS DRAWING IS UNPUBLISHED.

RELEASED FOR PUBLICATION

ALL RIGHTS RESERVED.

© COPYRIGHT - BY TYCO ELECTRONICS CORPORATION.

LOC

DIST

REVISIONS

AF

50

P

LTR

DESCRIPTION

DATE

DWN

APVD

O

TRANSFERED TO TYCO FORMAT

16SEP02

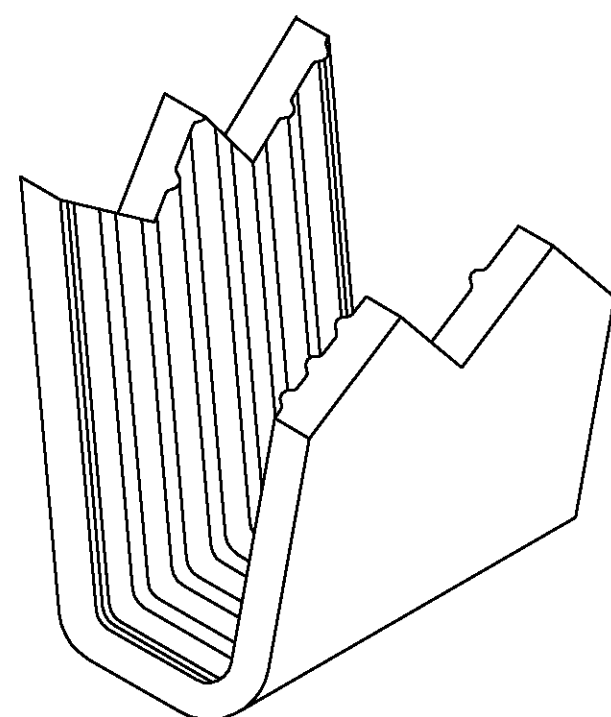
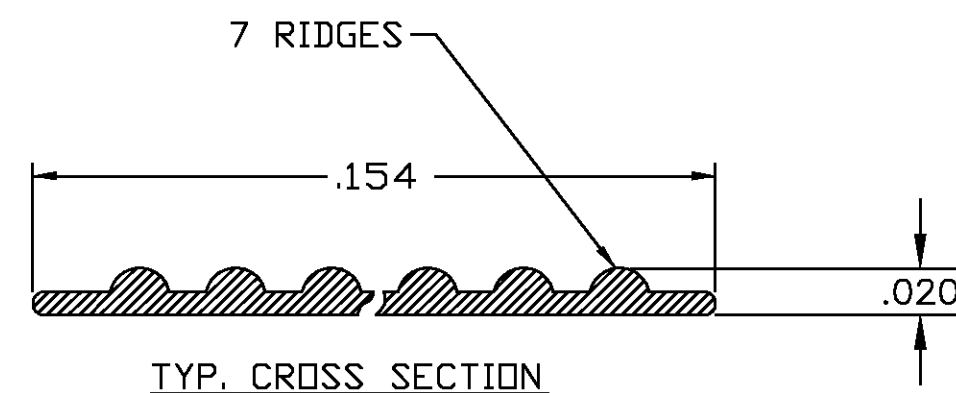
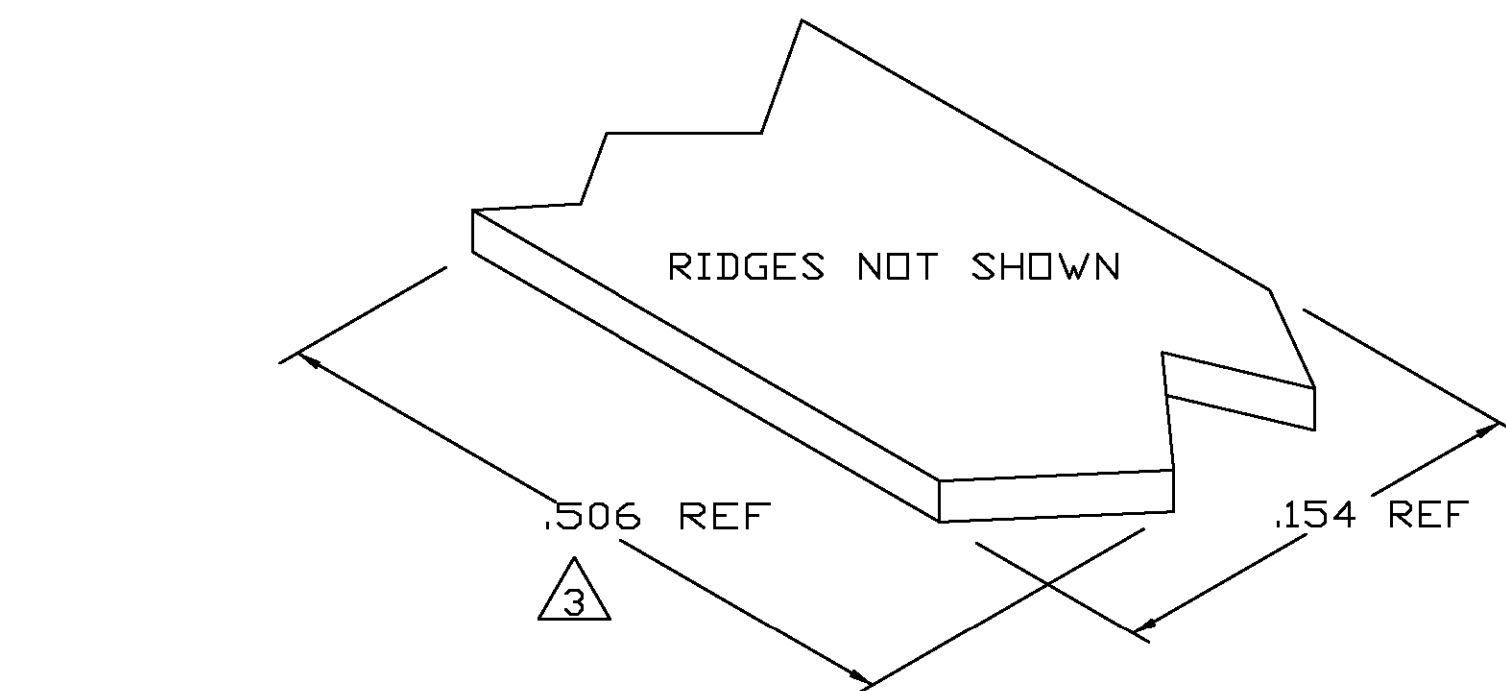
MF

EH

1 CRIMPBAND MATERIAL PROVIDED IN CONTINUOUS STRIP.

2 REFERENCE DESCRIPTIVE PART NUMBER L125/165D20A.

3 BLANK LENGTH DETERMINED BY 125/165 TOOLSET.



PARTIAL FORMED VIEW (REF)
FORMED BY APPLICATION TOOLING

1601710-1

PART NUMBER

THIS DRAWING IS A CONTROLLED DOCUMENT.

DWN 16SEP2002

CHK 16SEP2002

EDWARD HOWARD

APVD 16SEP2002

EDWARD HOWARD

PRODUCT SPEC

APPLICATION SPEC

WEIGHT

CUSTOMER DRAWING

tyco
ElectronicsTyco Electronics Corporation
Harrisburg, PA 17105-3608

NAME

CRIMPBAND, RTM

SIZE

CAGE CODE

DRAWING NO

RESTRICTED TO

A3

00779

C-1601710

SCALE 1:1

SHEET 1 OF 1

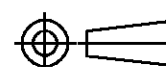
REV 0

MATERIAL

UNS C72500 CU-NI
ALLOY

FINISH

NONE

DIMENSIONS:
INCHESTOLERANCES UNLESS
OTHERWISE SPECIFIED:

0 PLC ± -
1 PLC ± -
2 PLC ± -
3 PLC ± .005
4 PLC ± -
ANGLES ± -