



Chipsmall Limited consists of a professional team with an average of over 10 year of expertise in the distribution of electronic components. Based in Hongkong, we have already established firm and mutual-benefit business relationships with customers from,Europe,America and south Asia,supplying obsolete and hard-to-find components to meet their specific needs.

With the principle of “Quality Parts,Customers Priority,Honest Operation,and Considerate Service”,our business mainly focus on the distribution of electronic components. Line cards we deal with include Microchip,ALPS,ROHM,Xilinx,Pulse,ON,Everlight and Freescale. Main products comprise IC,Modules,Potentiometer,IC Socket,Relay,Connector.Our parts cover such applications as commercial,industrial, and automotives areas.

We are looking forward to setting up business relationship with you and hope to provide you with the best service and solution. Let us make a better world for our industry!



Contact us

Tel: +86-755-8981 8866 Fax: +86-755-8427 6832

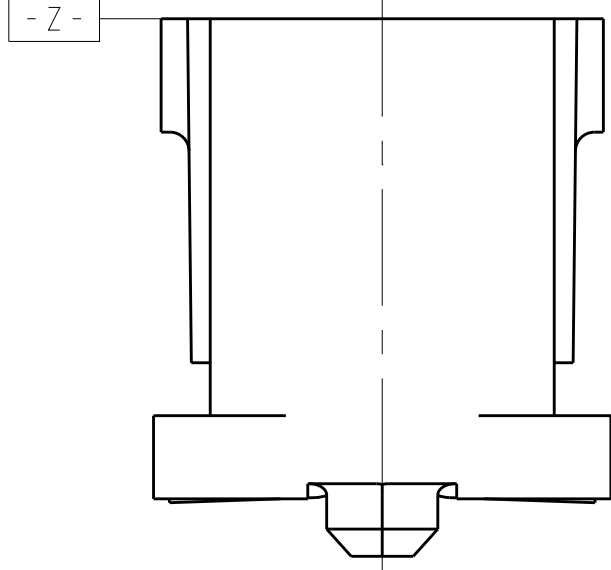
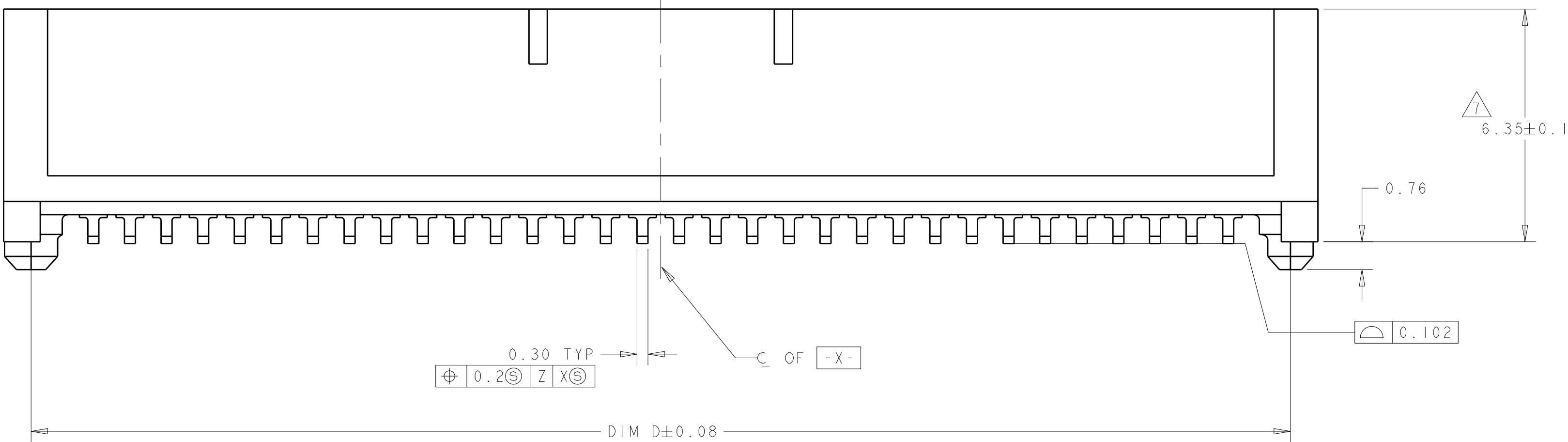
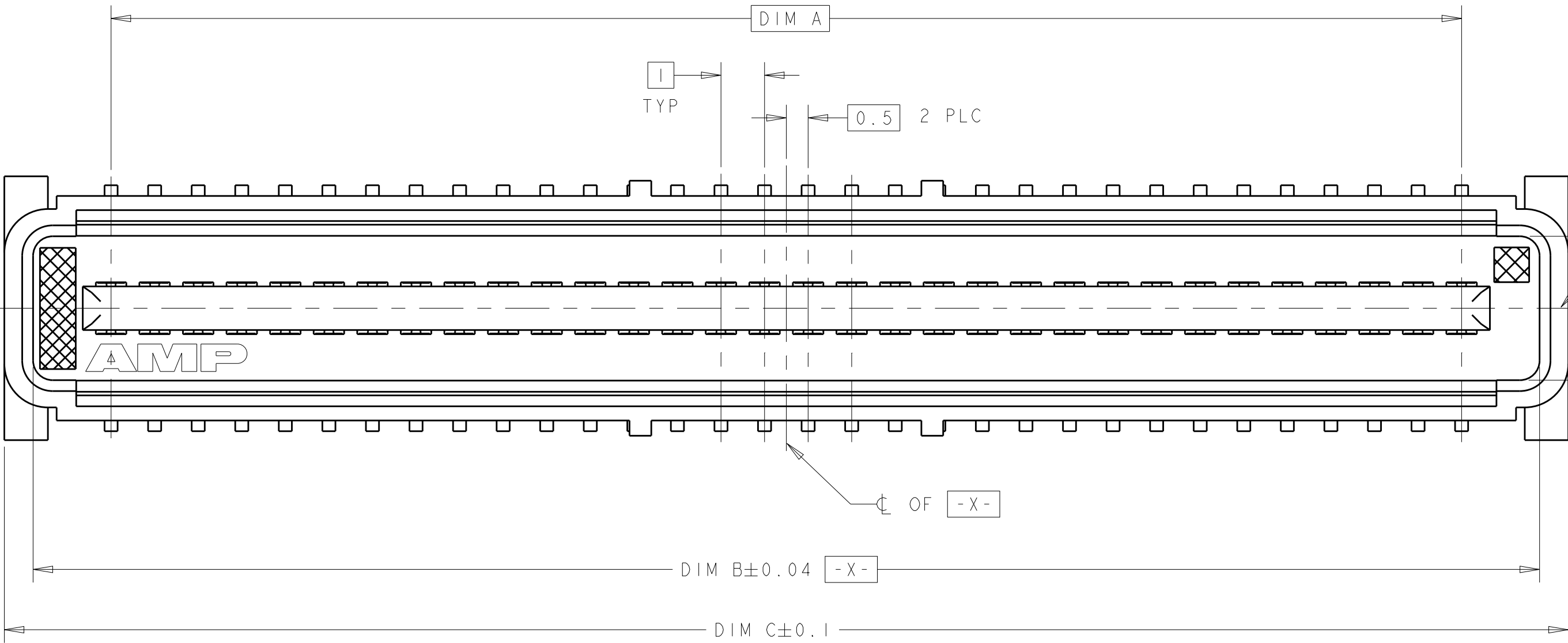
Email & Skype: info@chipsmall.com Web: www.chipsmall.com

Address: A1208, Overseas Decoration Building, #122 Zhenhua RD., Futian, Shenzhen, China

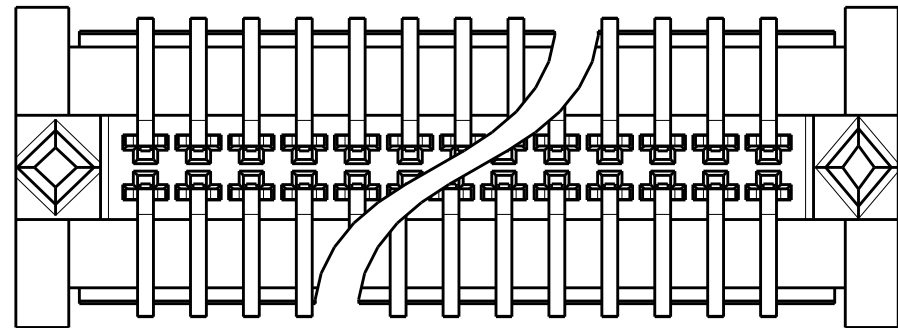


REVISIONS					
P	LTR	DESCRIPTION	DATE	DWN	APVD
	G	REV PER ECR-14-016951	11FEB2015	I.T	W.H

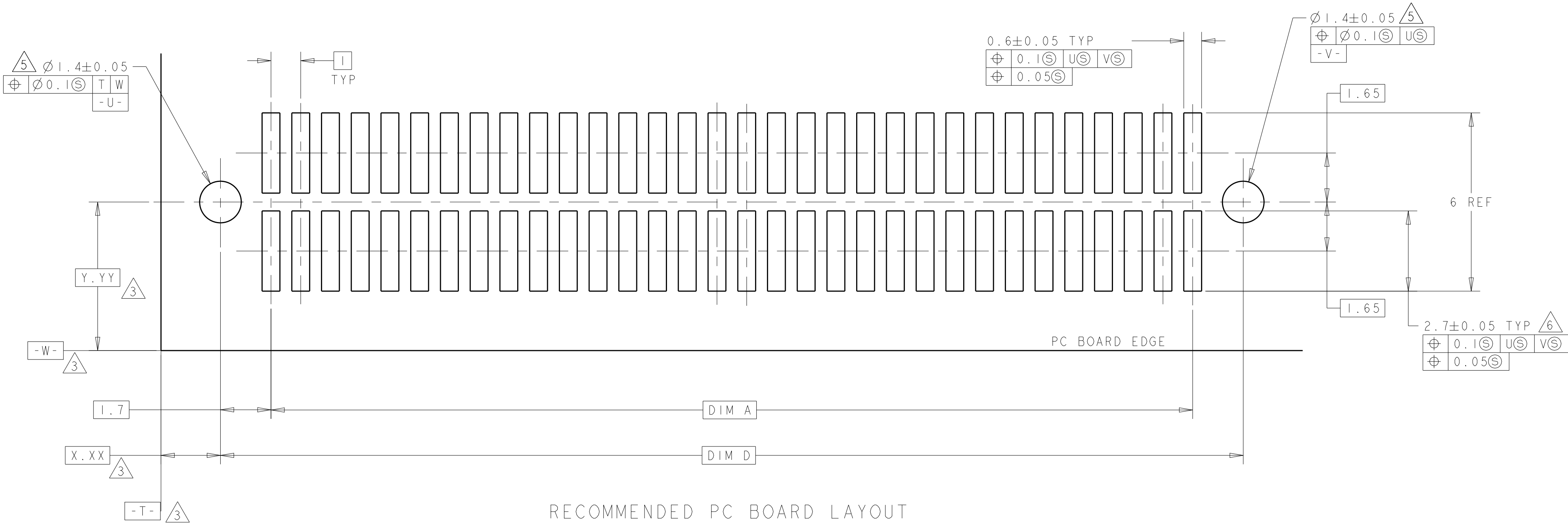
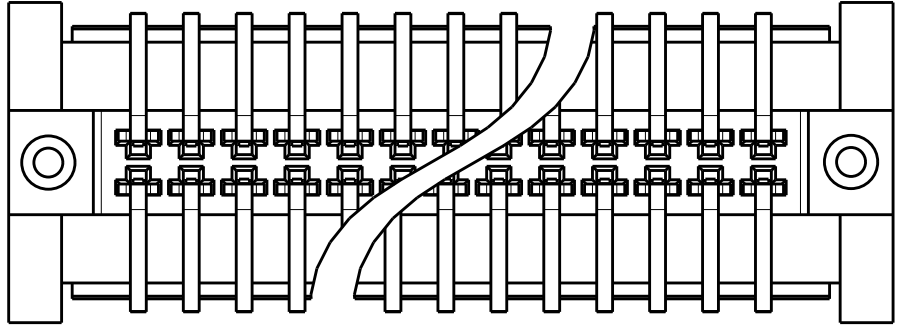
1. HOUSING MATERIAL: LIQUID CRYSTAL POLYMER. COLOR; BLACK.
CONTACT MATERIAL: PHOSPHOR BRONZE.
- 2 CONTACT FINISH: NICKEL UNDERPLATE ALL OVER, MATING SURFACES PLATED TO MEET PLI PERFORMANCE REQUIREMENTS OF INDUSTRY SPECIFICATION EIA-700AAAB, SOLDER TAILS PLATED TIN-LEAD.
- 3 DATUM LOCATIONS AND BASIC DIMENSIONS TO BE ESTABLISHED BY THE CUSTOMER. CONSULT AMP ENGINEERING WHEN PLACING MULTIPLE CONNECTORS ON A PC BOARD.
4. PACKAGED IN TAPE ON REELS PER EIA-481.
- 5 1.5 MIN DIAMETER HOLE SHOULD BE USED IF USING POST STYLE "A" AND PLACING ON PCB WITH VACUUM PLACEMENT EQUIPMENT.
- 6 SHORTER SOLDER LANDS MAY BE USED PER EIA 700AAAB, HOWEVER 2.7 LENGTH ASSURES OPTIMUM SOLDER FILLET REGARDLESS OF MANUFACTURER OF CONNECTOR.
- 7 REFERRED TO AS DIM N IN EIA 700AAAB SPECIFICATION.
- 8 CONTACT FINISH: 0.002 MINIMUM BRIGHT TIN-LEAD (93-7) ON SOLDER AREA, 0.00127 MINIMUM GOLD ON MATING AREA, BOTH OVER 0.00127 MINIMUM NICKEL ON ENTIRE CONTACT.
- 9 OBSOLETE PART NUMBER.
- 10 SQUARE AND DIAMOND SHAPED POSTS
- 11 ROUND SHAPED POSTS



STYLE A POST



STYLE B POST



RECOMMENDED PC BOARD LAYOUT

1	8	44.4	45.9	44.58	41	8	84	3-120525-2
1	8	34.4	35.9	34.58	31	8	64	3-120525-1
1	2	44.4	45.9	44.58	41	8	84	2-120525-2
1	2	34.4	35.9	34.58	31	8	64	2-120525-1
1	8	44.4	45.9	44.58	41	8	84	1-120525-2
1	8	34.4	35.9	34.58	31	8	64	1-120525-1
9	10	44.4	45.9	44.58	41	8	84	120525-2
9	10	34.4	35.9	34.58	31	8	64	120525-1
POST STYLE	FINISH	DIM D	DIM C	DIM B	DIM A	STACK HGTS	POS	PART NO
THIS DRAWING IS A CONTROLLED DOCUMENT.		DWN	J. REED	2/11/97	TE Connectivity			
DIMENSIONS:		CHK	L.V.O	2/11/97	NAME			
mm		TOLERANCES UNLESS OTHERWISE SPECIFIED:		PRODUCT SPEC		PLUG ASSY, 1.0mm FH (IEEE1386)		
0 PLC		±		502-1079		CONNECTOR		
1 PLC		±0.03		APPLICATION SPEC		SIZE		
2 PLC		±0.003		114-25045		CAGE CODE		
3 PLC		±		WEIGHT		DRAWING NO		
4 PLC		±		CUSTOMER DRAWING		RESTRICTED TO		
ANGLES		±0°30'		SCALE		10:1		
FINISH		SEE TABLE		SHEET		1 OF 1		
MATERIAL		-		REV		G		