



Chipsmall Limited consists of a professional team with an average of over 10 year of expertise in the distribution of electronic components. Based in Hongkong, we have already established firm and mutual-benefit business relationships with customers from,Europe,America and south Asia,supplying obsolete and hard-to-find components to meet their specific needs.

With the principle of “Quality Parts,Customers Priority,Honest Operation,and Considerate Service”,our business mainly focus on the distribution of electronic components. Line cards we deal with include Microchip,ALPS,ROHM,Xilinx,Pulse,ON,Everlight and Freescale. Main products comprise IC,Modules,Potentiometer,IC Socket,Relay,Connector.Our parts cover such applications as commercial,industrial, and automotives areas.

We are looking forward to setting up business relationship with you and hope to provide you with the best service and solution. Let us make a better world for our industry!



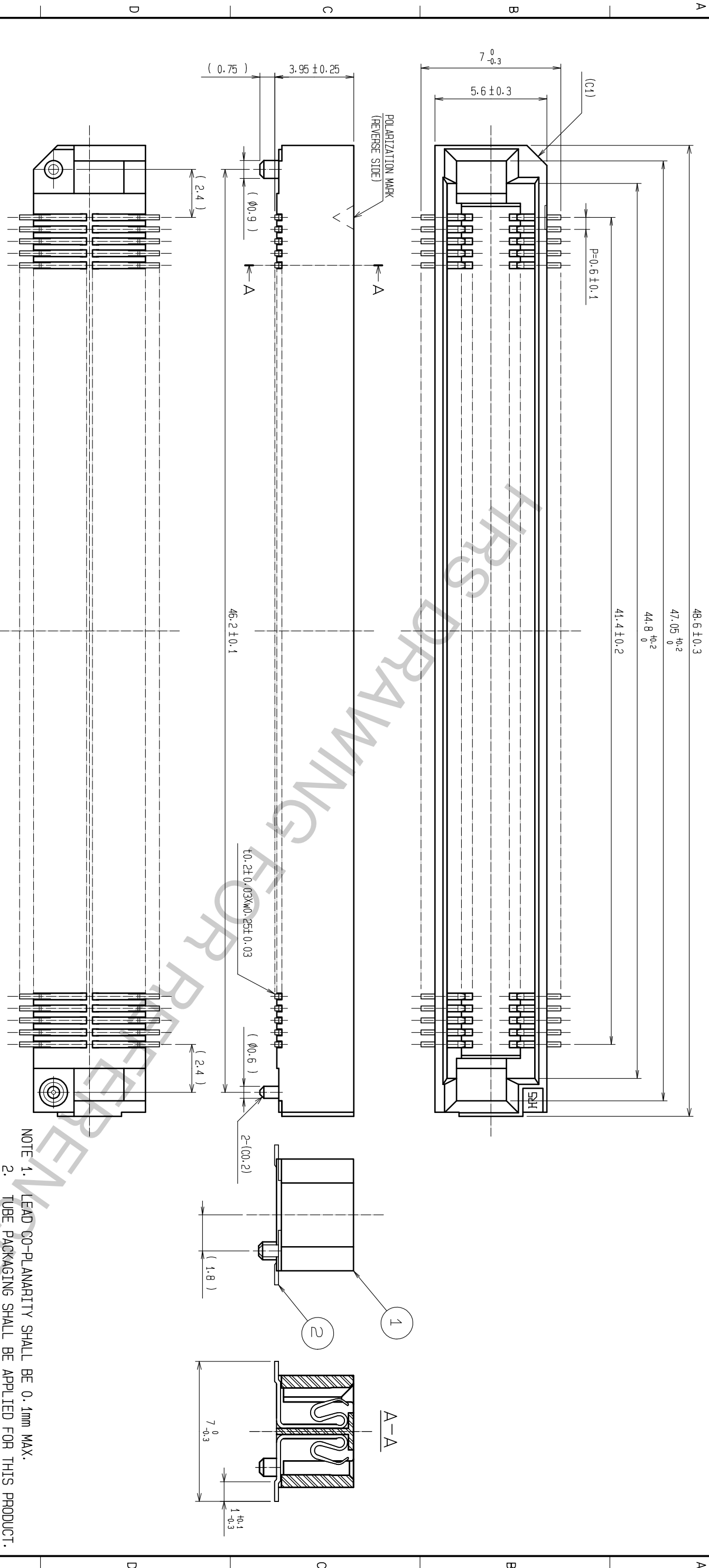
Contact us

Tel: +86-755-8981 8866 Fax: +86-755-8427 6832

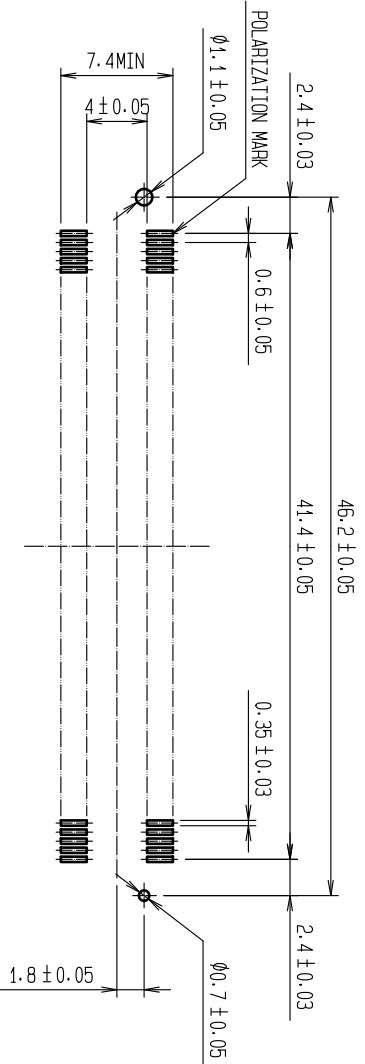
Email & Skype: info@chipsmall.com Web: www.chipsmall.com

Address: A1208, Overseas Decoration Building, #122 Zhenhua RD., Futian, Shenzhen, China





RECOMMENDED LAND PATTERN DIMENSION OF PCB (MOUNTING SIDE) (2:1)
(RECOMMENDED METAL MASK THICKNESS:0.15mm)



NOTE 1. LEAD CO-PLANARITY SHALL BE 0.1mm MAX.

2. TUBE PACKAGING SHALL BE APPLIED FOR THIS PRODUCT.

SEE NEXT PAGE FOR DETAILS.

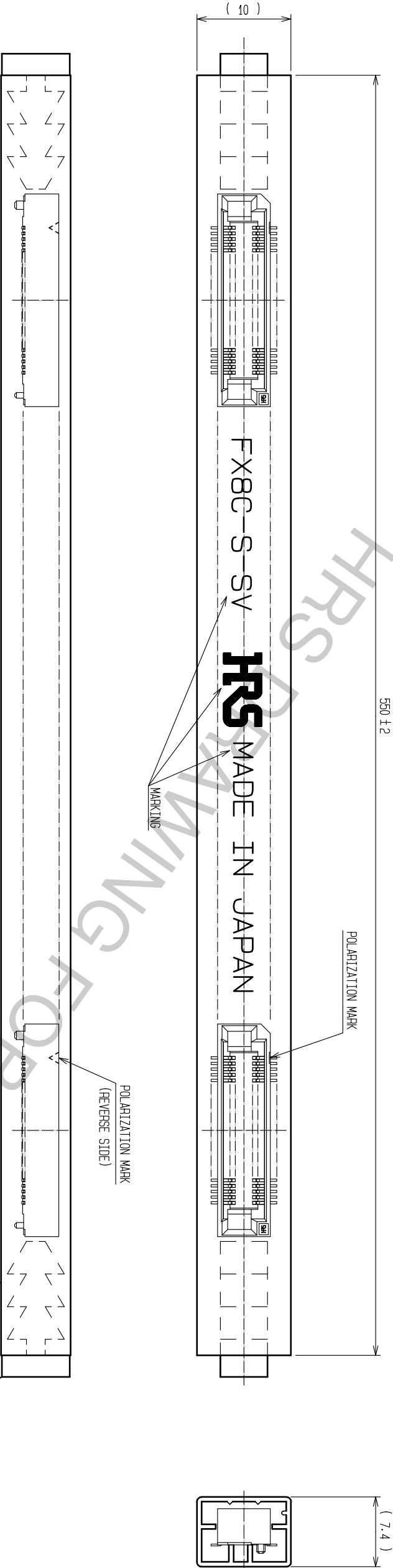
3. FOR MODIFICATION, ETC., PREVENTIVE HOLE FOR SINK

MARK MAY BE ADDED ACCORDING TO CIRCUMSTANCES.

4. THE DIMENSIONS IN PARENTHESES ARE FOR REFERENCE.

2		PHOSPHOR BRONZE	CONTACT AREA:GOLD 0.1μm min.			
			LEAD AREA:GOLD 0.03μm min.			
1	PPS	UNDER PLATING:NICKEL 1.5μm min.	4	ELASTOMERS	(STOPPER)	
		LIGHT BROWN (UL94V-0)	3	POLYVINYL CHLORIDE (TUBE)		
NO.	MATERIAL	FINISH , REMARKS	NO.	MATERIAL	FINISH , REMARKS	
UNITS		SCALE	COUNT	DESCRIPTION OF REVISIONS	DESIGNED	CHECKED
mm		5 : 1				DATE
		APPROVED :NH, NAKATA	18. 02. 28	DRAWING	EDC-150885-68-00	
		CHECKED :HT, YAMAGUCHI	18. 02. 28	PART	FX8C-140S-SV(68)	
		DESIGNED :TY, EDAGAWA	18. 02. 28	NO.		
		DRAWN :MK, INOUE	18. 02. 23	CODE	CL578-0807-9-68	
				NO.		

DRAWING FOR PACKING(FREE)



NOTE 1. 1 TUBE : 10 CONNECTORS.
2. THE DIMENSIONS IN PARENTHESES ARE FOR REFERENCE.

DRAWING NO.		EDC-150885-68-00
PART NO.		FX8C-140S-SV(68)
CODE		CL578-0807-9-68
HRS		△ 2/2