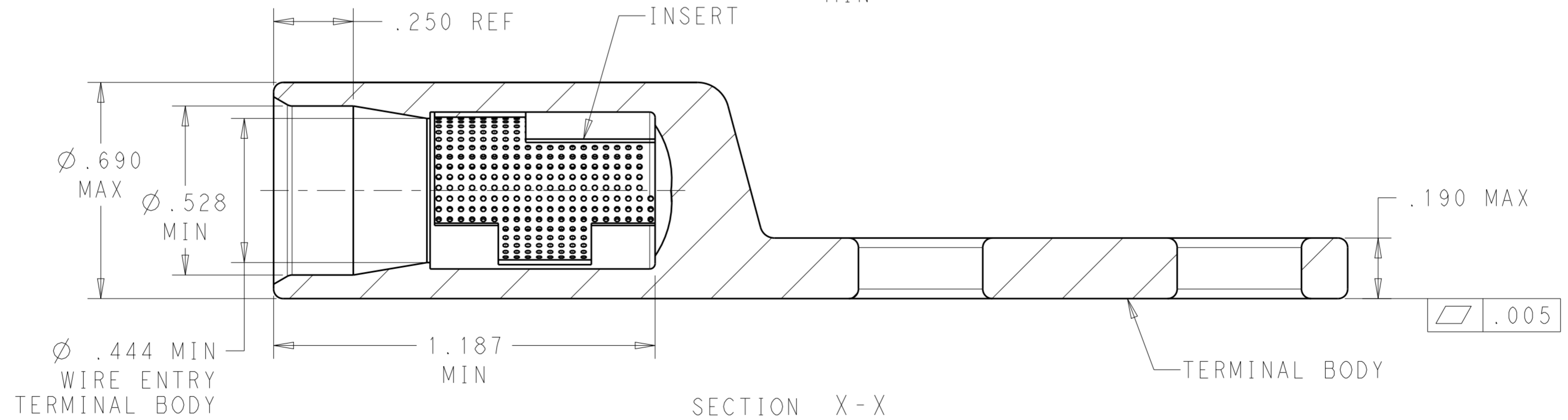
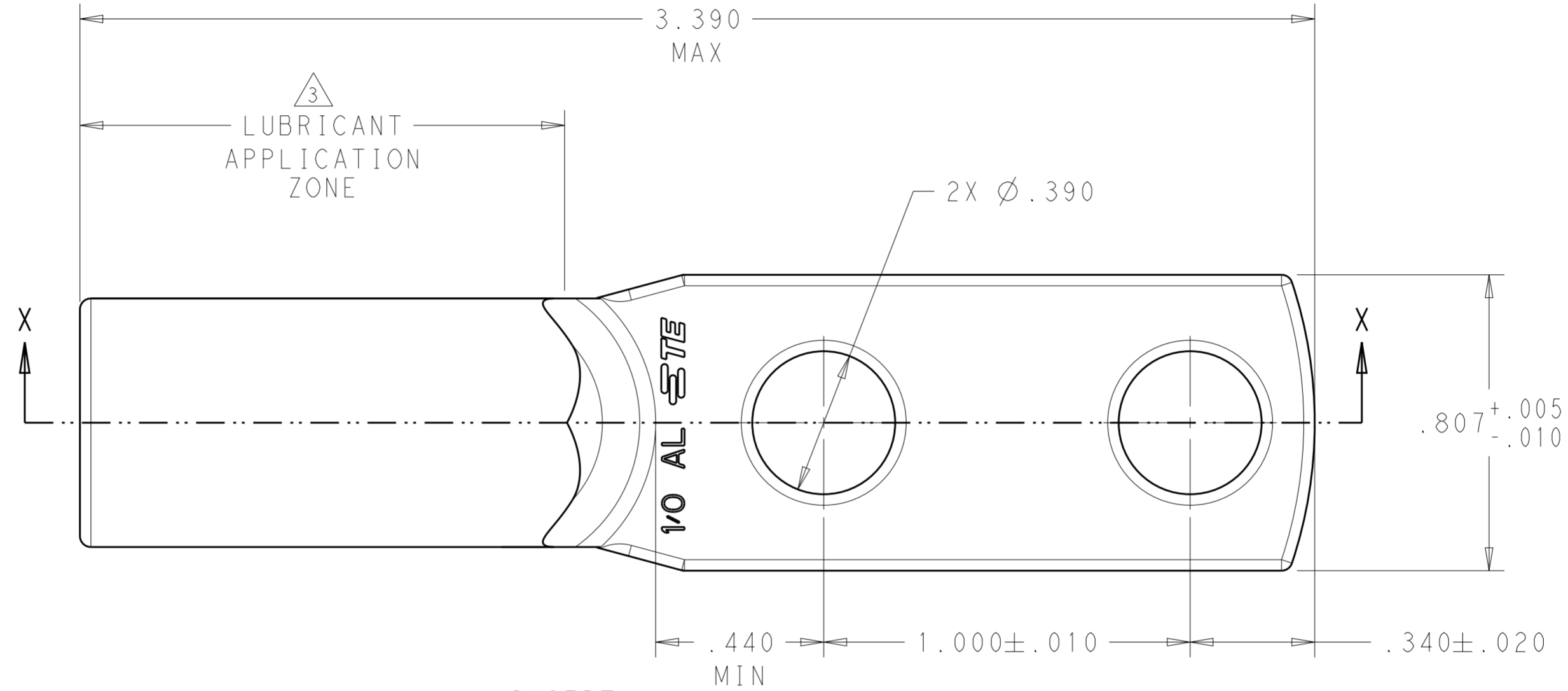
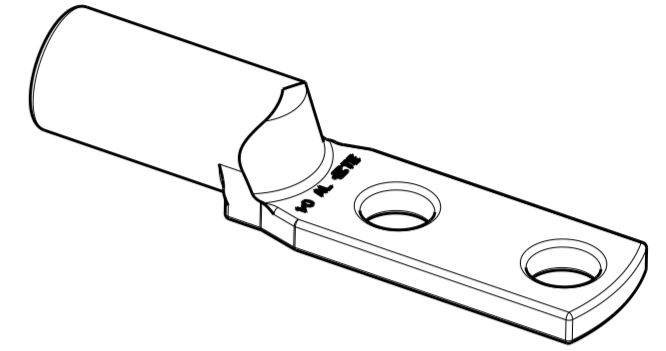


THIS DRAWING IS UNPUBLISHED. RELEASED FOR PUBLICATION 20  
 © COPYRIGHT 20 BY - ALL RIGHTS RESERVED.

LOC		DIST		REVISIONS			
P	LTR	DESCRIPTION	DATE	DWN	APVD		
	A	REVISED AND RELEASED PER ECO-14-005182	07APR2014	BY	KAD		
	B	REVISED PER ECO-15-005560	06APR2015	DLB	KAD		

- MATERIAL:  
 BODY: ALUMINUM PER ASTM B317  
 INSERT: BRASS PER ASTM B36
- FINISH:  
 BODY: .000600 MIN MATTE TIN PER ASTM B545  
 OVER .000060 MIN NICKEL PER ASTM B733.  
 INSERT: .000150 MIN MATTE NICKEL PER QQ-N-290

3 PTFE DRY LUBRICANT 360 DEGREE ON OUTER DIAMETER OF CRIMP BARREL IN ZONE SHOWN.



2102580-1  
 PART NUMBER

THIS DRAWING IS A CONTROLLED DOCUMENT.		DWN Brent D. Yohn 07APR2014	TE Connectivity	
DIMENSIONS: IN		CHK K. A. DeBock 07APR2014		
TOLERANCES UNLESS OTHERWISE SPECIFIED:		APVD K. A. DeBock 07APR2014	NAME TERMINAL ASSEMBLY ALUMINUM, STRAIGHT, DUAL HOLE SIZE 1/0	
0 PLC ± 1 PLC ± 2 PLC ±.01 3 PLC ±.005 4 PLC ±.0005 ANGLES ±1		PRODUCT SPEC -	SIZE A200779	DRAWING NO C-2102580
MATERIAL SEE CALL-OUT		FINISH SEE-CALL-OUT	WEIGHT 25.38GRAMS	RESTRICTED TO -
CUSTOMER DRAWING		SCALE 3:1	SHEET 1 OF 1	REV B