



Chipsmall Limited consists of a professional team with an average of over 10 year of expertise in the distribution of electronic components. Based in Hongkong, we have already established firm and mutual-benefit business relationships with customers from,Europe,America and south Asia,supplying obsolete and hard-to-find components to meet their specific needs.

With the principle of “Quality Parts,Customers Priority,Honest Operation,and Considerate Service”,our business mainly focus on the distribution of electronic components. Line cards we deal with include Microchip,ALPS,ROHM,Xilinx,Pulse,ON,Everlight and Freescale. Main products comprise IC,Modules,Potentiometer,IC Socket,Relay,Connector.Our parts cover such applications as commercial,industrial, and automotives areas.

We are looking forward to setting up business relationship with you and hope to provide you with the best service and solution. Let us make a better world for our industry!



## Contact us

Tel: +86-755-8981 8866 Fax: +86-755-8427 6832

Email & Skype: [info@chipsmall.com](mailto:info@chipsmall.com) Web: [www.chipsmall.com](http://www.chipsmall.com)

Address: A1208, Overseas Decoration Building, #122 Zhenhua RD., Futian, Shenzhen, China

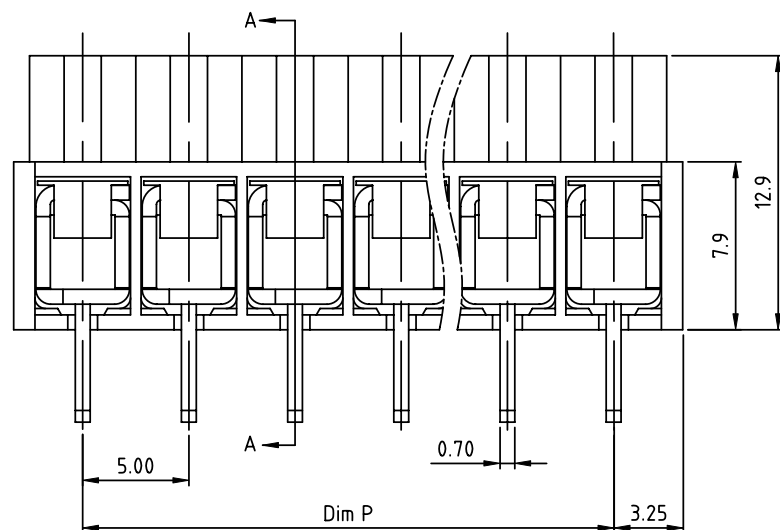
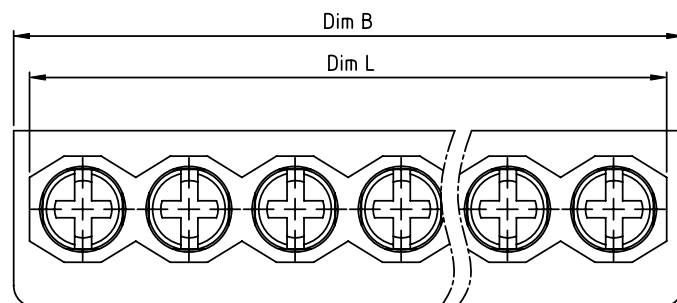


PRODUCT NUMBER

PITCH

T4xx04x200J0G

5.00 mm



PART NO.: T4 xx 04 x 2 00J0 G

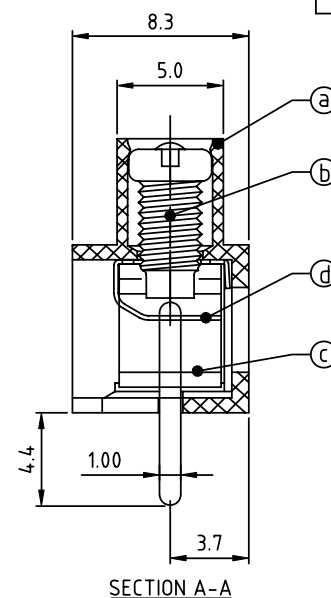
N = Number of poles  
Dim L=Nx5.0  
Dim P=(N-1)x5.0  
Dim B=Nx5.0+1.5

poles	Tolerance
2-6p	±0.20
7-12p	±0.25
13-18p	±0.30
19-24p	±0.40

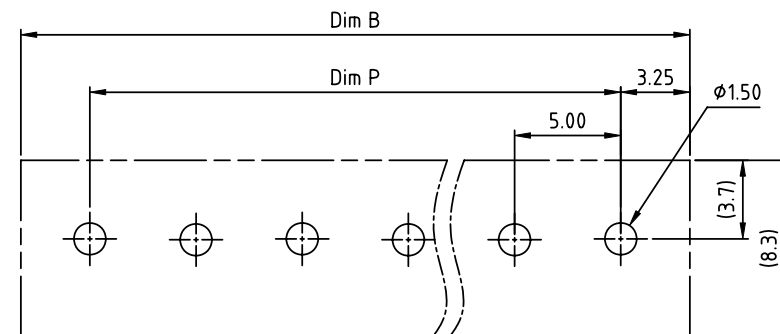
Solid block  
No. of poles  
02 2 poles  
03 3 poles  
...  
24 24 poles

Body Color  
0 Black (RAL9005)  
2 Red (RAL3001/D)  
3 Orange(RAL2011/P)  
4 Yellow(RAL1018/A)  
5 Green(RAL6018/T)  
6 Blue (RAL5015/A)  
8 Grey(RAL7035/D)  
9 White(RAL1102)  
C Green(RAL6018/U)

RoHS compliant  
(lead<4%)  
In copper Alloy



SECTION A-A

RECOMMENDED P.C.B LAYOUT  
TOP VIEW

## Material:

- Item@Terminal body(metal housing): Brass Stamping,Tin plated
- Item①Terminal screw: Steel Zinc plating "+/-" combination type
- Item© Terminal body Brass stamping clamp,Tin plated
- Item②Wire guard: Stainless steel

## Electrical cULus/VDE

- Voltage rating:300VAC/450VAC
- Current rating:10A/17.5A
- Wire range: 0.75-4.0mm<sup>2</sup>
- Solid wire(AWG):12-20
- Stranded wire(AWG):12-20
- Torque: 3.5Lb-In/0.4Nm
- Screw: M3
- Wire strip length: 6-7mm
- Withstanding Voltage: 1.6KV/2.5KV
- Operating temperature: -40°C to +115°C
- Soldering temperature: 260°C±5°C/5 Sec
- Safety Approval: cULus VDE

mat'l. code				surface ASME Y14.5	tolerance ASME Y14.5	projection	product family			
ltr	ecn	no	dr	date	tolerances unless otherwise specified		TERMINAL BLOCK			
					angles	MM	title			
					X±0.5		TERMINAL BLOCK			
					X.X±0.3		WIRE PROTECTOR,180D WIRE INLET,SOLID BLOCK			
					X*±1"	scale	dwg no			
					dr EVIN ZHONG 040114		sheet 1 of 1 size			
					enr EVIN ZHONG 040114		T4xx04x200J0G			
					chr HANKE FENG 040114		A4			
					appd SHI JUN 040114		type			
							CUSTOMER Drawing			
sheet index	revision	A		1						