



Chipsmall Limited consists of a professional team with an average of over 10 year of expertise in the distribution of electronic components. Based in Hongkong, we have already established firm and mutual-benefit business relationships with customers from,Europe,America and south Asia,supplying obsolete and hard-to-find components to meet their specific needs.

With the principle of “Quality Parts,Customers Priority,Honest Operation,and Considerate Service”,our business mainly focus on the distribution of electronic components. Line cards we deal with include Microchip,ALPS,ROHM,Xilinx,Pulse,ON,Everlight and Freescale. Main products comprise IC,Modules,Potentiometer,IC Socket,Relay,Connector.Our parts cover such applications as commercial,industrial, and automotives areas.

We are looking forward to setting up business relationship with you and hope to provide you with the best service and solution. Let us make a better world for our industry!



Contact us

Tel: +86-755-8981 8866 Fax: +86-755-8427 6832

Email & Skype: info@chipsmall.com Web: www.chipsmall.com

Address: A1208, Overseas Decoration Building, #122 Zhenhua RD., Futian, Shenzhen, China



4

3

2

1

THIS DRAWING IS UNPUBLISHED.

RELEASED FOR PUBLICATION

20

© COPYRIGHT 20

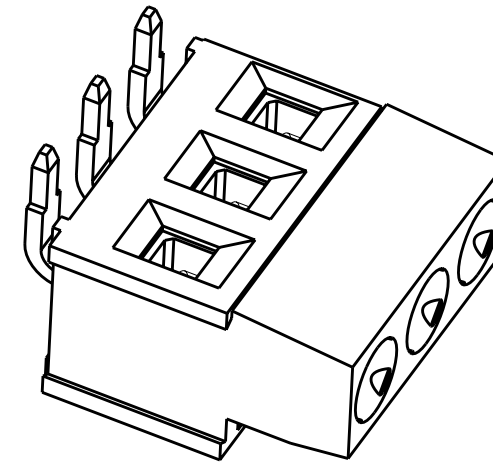
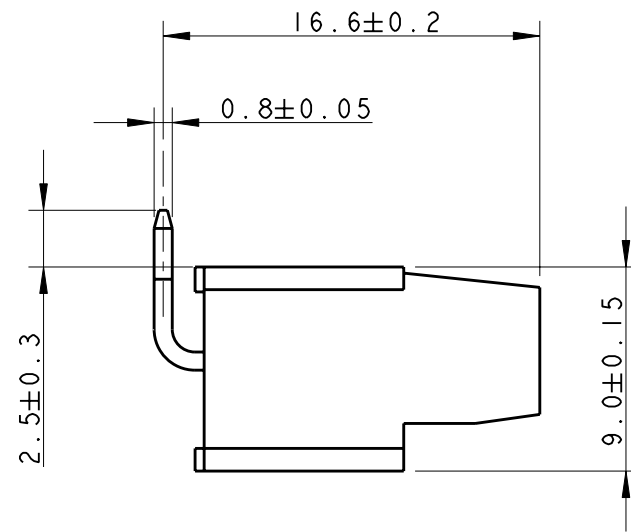
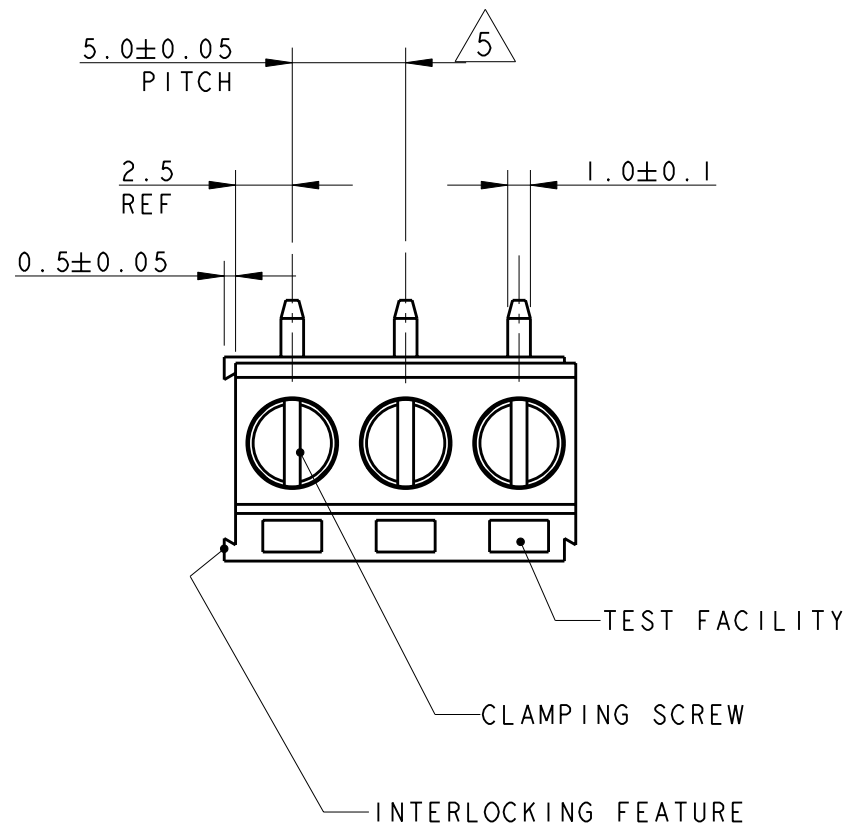
BY TYCO ELECTRONICS CORPORATION. ALL RIGHTS RESERVED.

LOC

DIST

REVISIONS

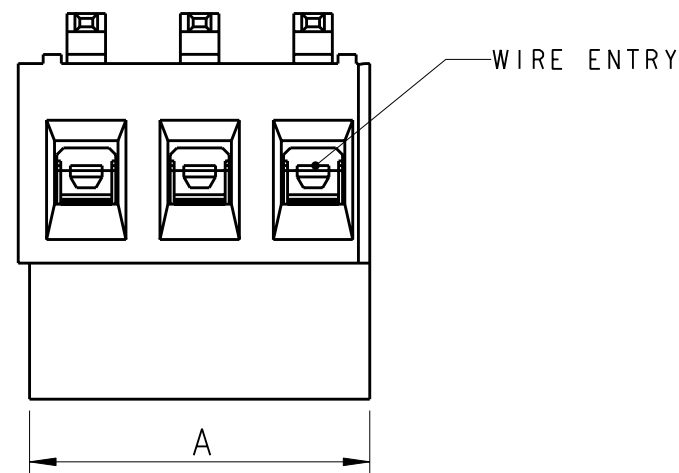
P	LTR	DESCRIPTION	DATE	DWN	APVD
	B	REVISED PER 0G3B-0119-01	01FEB2002	EZ	DB
	D	REVISED PER ECO-08-003241	06FEB2008	SS	CR



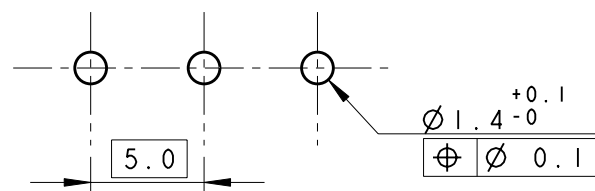
P/N 284410-3 AS SHOWN

125.0	25	2-284410-5
120.0	24	2-284410-4
115.0	23	2-284410-3
110.0	22	2-284410-2
105.0	21	2-284410-1
100.0	20	2-284410-0
95.0	19	1-284410-9
90.0	18	1-284410-8
85.0	17	1-284410-7
80.0	16	1-284410-6
75.0	15	1-284410-5
70.0	14	1-284410-4
65.0	13	1-284410-3
60.0	12	1-284410-2
55.0	11	1-284410-1
50.0	10	1-284410-0
45.0	9	284410-9
40.0	8	284410-8
35.0	7	284410-7
30.0	6	284410-6
25.0	5	284410-5
20.0	4	284410-4
15.0	3	284410-3
10.0	2	284410-2
DIM "A"	NO OF POS	PART NUMBER

- 1 MATERIALS AND FINISH
HOUSING : PA 6.6, UL 94-V0, COLOR GREEN
CLAMP : BRASS, NICKEL PLATED
TERMINAL : BRASS, TIN PLATED
CLAMPING SCREW : M3, BRASS, NICKEL PLATED
- 2 SUITABLE FOR 1.6-2.4 mm PC BOARD THICKNESS
- 3 END-TO-END STACKABLE W/INTERLOCK WITHOUT LOSS OF CENTERLINE SPACING
- 4 WIRE SIZE RANGE
12 - 30 AWG
- 5 NOT CUMULATIVE TOLERANCE



RECOMMENDED PCB LAYOUT



THIS DRAWING IS A CONTROLLED DOCUMENT FOR TYCO ELECTRONICS CORPORATION IT IS SUBJECT TO CHANGE AND THE CONTROLLING ENGINEERING ORGANIZATION SHOULD BE CONTACTED FOR THE LATEST REVISION.		DWN 01FEB2002 E. ZANOLINI		Tyco Electronics Harrisburg, PA 17105-3608	
CHK 01FEB2002 E. ZANOLINI		APVD 01FEB2002 D. BIEVENOUR		NAME TERMINAL BLOCK, PCB MOUNT, 270° STACKING WITH INTERLOCK BOTTOM ENTRY WIRE, 5mm PITCH	
DIMENSIONS: mm		TOLERANCES UNLESS OTHERWISE SPECIFIED:		SIZE A3	
0 PLC ±.3 1 PLC ±.3 2 PLC ±.25 3 PLC ±. 4 PLC ±. ANGLES ±2		PRODUCT SPEC 108-20166		CAGE CODE 00779	
MATERIAL 1		FINISH 1		DRAWING NO C-284410	
		WEIGHT -		RESTRICTED TO -	
CUSTOMER DRAWING				SCALE 3:1	
				SHEET 1	
				OF 1	
				REV D	