



Chipsmall Limited consists of a professional team with an average of over 10 year of expertise in the distribution of electronic components. Based in Hongkong, we have already established firm and mutual-benefit business relationships with customers from,Europe,America and south Asia,supplying obsolete and hard-to-find components to meet their specific needs.

With the principle of “Quality Parts,Customers Priority,Honest Operation,and Considerate Service”,our business mainly focus on the distribution of electronic components. Line cards we deal with include Microchip,ALPS,ROHM,Xilinx,Pulse,ON,Everlight and Freescale. Main products comprise IC,Modules,Potentiometer,IC Socket,Relay,Connector.Our parts cover such applications as commercial,industrial, and automotives areas.

We are looking forward to setting up business relationship with you and hope to provide you with the best service and solution. Let us make a better world for our industry!



## Contact us

Tel: +86-755-8981 8866 Fax: +86-755-8427 6832

Email & Skype: [info@chipsmall.com](mailto:info@chipsmall.com) Web: [www.chipsmall.com](http://www.chipsmall.com)

Address: A1208, Overseas Decoration Building, #122 Zhenhua RD., Futian, Shenzhen, China



10

9

8

7

6

5

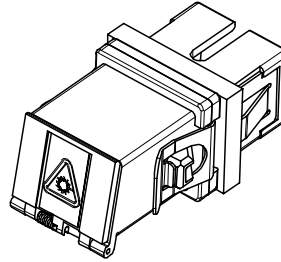
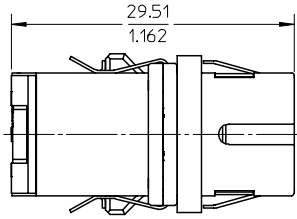
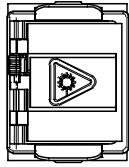
4

3

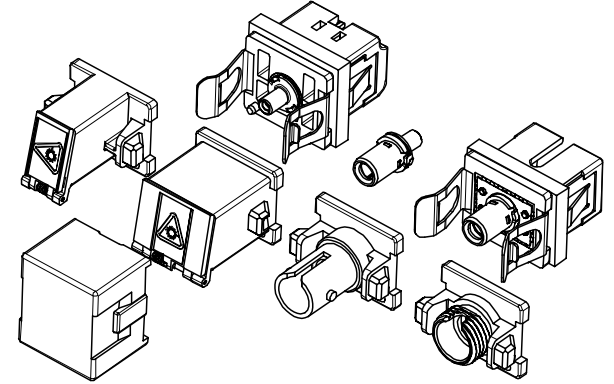
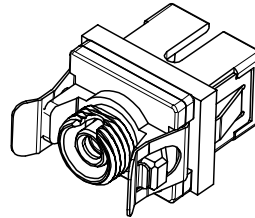
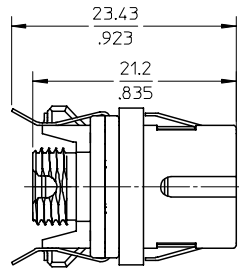
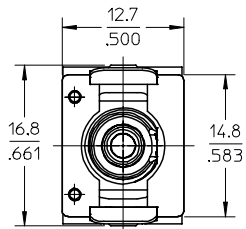
2

106154

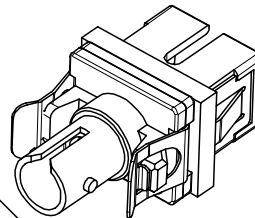
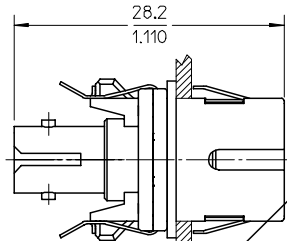
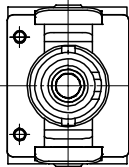
## SC BASE/SC MODULE



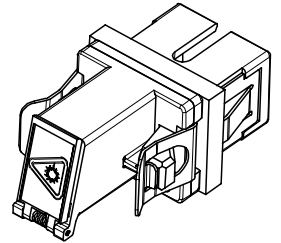
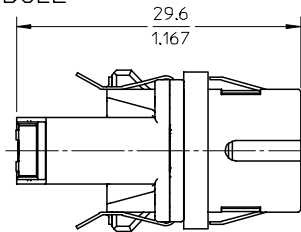
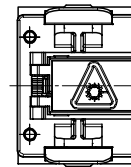
## SC BASE/FC MODULE



## SC BASE/ST MODULE



## SC BASE/LC MODULE



## NOTES:

ALL DIMENSIONS ARE FOR REFERENCE ONLY.


WORK AREA  
PLOT

ENTER DESCRIPTION	REV
EC NO: MF2007-0670	
DRWN:SERNST	2007/05/07
CHKD:	2007/05/07
APPR:SMIGO	2007/05/11

QUALITY SYMBOLS	DESCRIPTION
	=0
	=0.05

GENERAL TOLERANCES (UNLESS SPECIFIED)	
4 PLACES	± ---
3 PLACES	± ---
2 PLACES	± ---
1 PLACE	± ---
ANGULAR ± 1 °	
DRAFT WHERE APPLICABLE MUST REMAIN WITHIN DIMENSIONS	

DIMENSION STYLE	
MM/IN	
DRAWN BY	DATE
SERNST	2006/02/13
CHECKED BY	DATE
DSZ ILAGYI	2006/03/07
APPROVED BY	DATE
SMIGO	2006/03/07
MATERIAL NO.	
1061540000	
SIZE	
B	

SCALE 2:1	DESIGN UNITS METRIC	 THIRD ANGLE PROJECTION
TITLE DEVELOPMENT KIT UNIVERSAL ADAPTER		
MOLEX INCORPORATED		
DOCUMENT NO. SD-106154-0000		SHEET NO. 1 OF 2
THIS DRAWING CONTAINS INFORMATION THAT IS PROPRIETARY TO MOLEX SHOULD NOT BE USED WITHOUT WRITTEN PERMISSION		

10

9

8

7

6

5

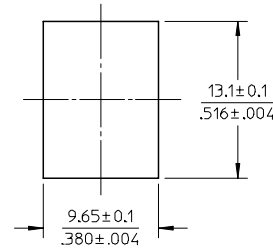
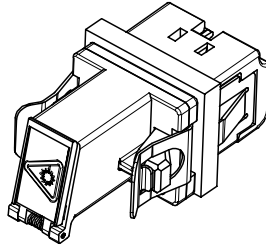
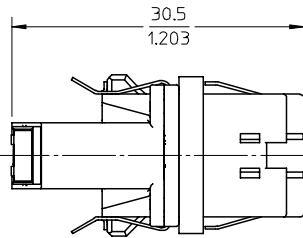
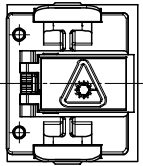
4

3

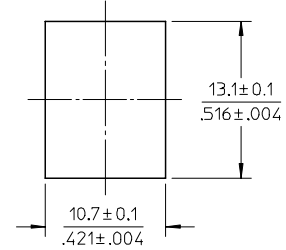
2

106154

## LC BASE/LC MODULE

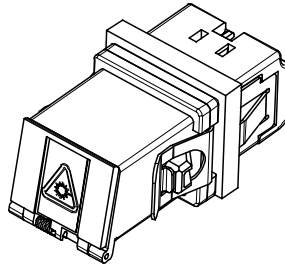
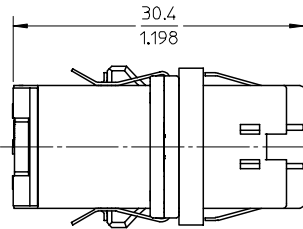
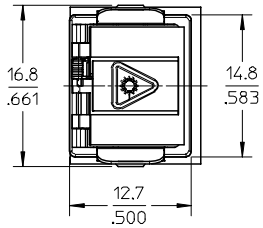


RECOMMENDED MOUNTING CUTOUT  
FOR SC BASE (SEE NOTE)  
(1.6mm THICK PANEL)

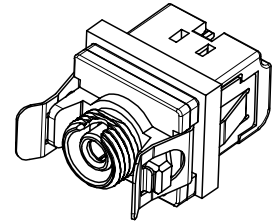
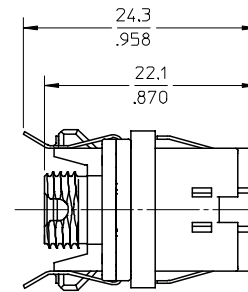
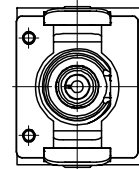


RECOMMENDED MOUNTING CUTOUT  
FOR LC BASE (SEE NOTE)  
(1.6mm THICK PANEL)

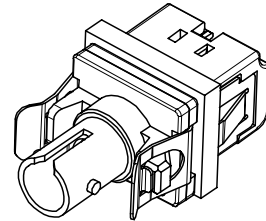
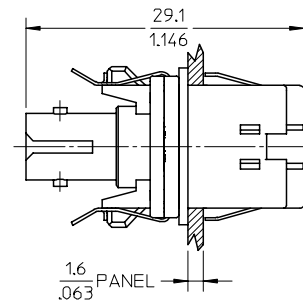
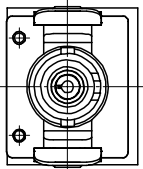
## LC BASE/SC MODULE



## LC BASE/FC MODULE



## LC BASE/ST MODULE



## NOTE:

LC BASE CUTOUT MAY ALSO BE USED FOR THE SC BASE. DESPITE THE ADDITIONAL MOVEMENT, THE EMI GASKET WILL STILL FUNCTION AND EMI PROTECTION WILL NOT BE COMPROMISED.

ENTER DESCRIPTION	REV
EC NO: MF2007-0670	
DRWN:SERNST	
CHKD:	
APPR:SMIGO	

QUALITY SYMBOLS	DESCRIPTION
▽=0	
▽=0	

GENERAL TOLERANCES (UNLESS SPECIFIED)	
	mm
4 PLACES	± .005
3 PLACES	± .005
2 PLACES	± .005
1 PLACE	± .005
ANGULAR ± 1 °	
DRAFT WHERE APPLICABLE MUST REMAIN WITHIN DIMENSIONS	

DIMENSION STYLE	
MM/IN	
DRAWN BY	DATE
SERNST	2006/02/13
CHECKED BY	DATE
DSZ ILAGYI	2006/03/07
APPROVED BY	DATE
SMIGO	2006/03/07
MATERIAL NO.	
1061540000	

SCALE	DESIGN UNITS	THIRD ANGLE PROJECTION
2:1	METRIC	
TITLE		
DEVELOPMENT KIT UNIVERSAL ADAPTER		
MOLEX INCORPORATED		
DOCUMENT NO.		SHEET NO.
SD-106154-0000		2 OF 2
THIS DRAWING CONTAINS INFORMATION THAT IS PROPRIETARY TO MOLEX INCORPORATED AND SHOULD NOT BE USED WITHOUT WRITTEN PERMISSION		

9

8

7

6

5

4

3

2

1