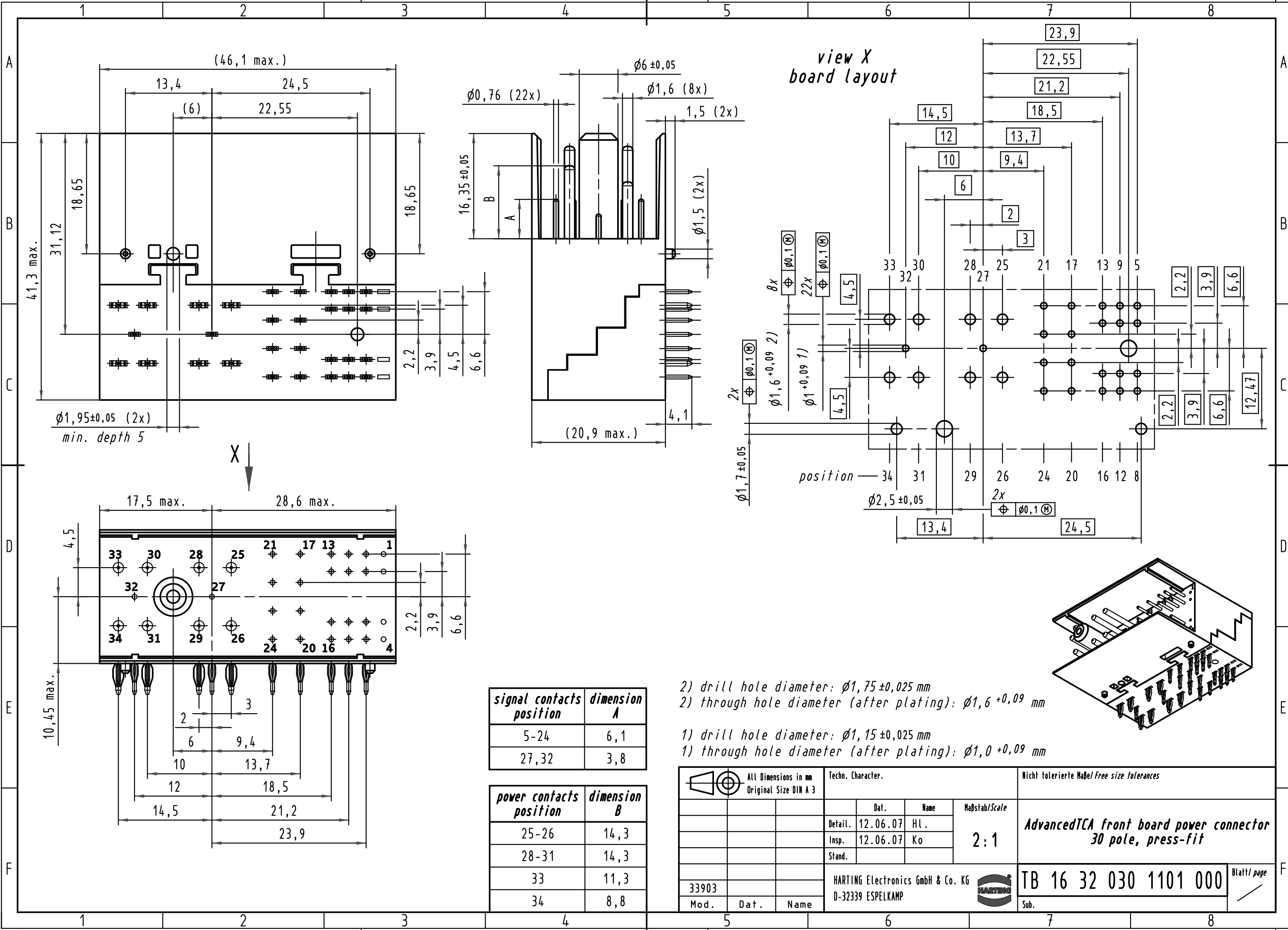


Alle Rechte vorbehalten/ All rights reserved

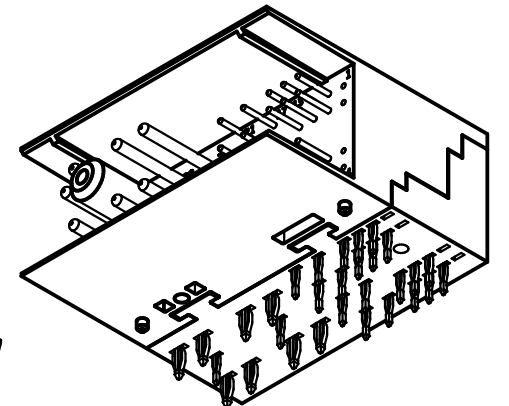


view X
board layout

signal contacts position	dimension A
5-24	6,1
27,32	3,8

power contacts position	dimension B
25-26	14,3
28-31	14,3
33	11,3
34	8,8

- 2) drill hole diameter: $\phi 1,75 \pm 0,025$ mm
- 2) through hole diameter (after plating): $\phi 1,6 + 0,09$ mm
- 1) drill hole diameter: $\phi 1,15 \pm 0,025$ mm
- 1) through hole diameter (after plating): $\phi 1,0 + 0,09$ mm



	All Dimensions in mm Original Size DIN A 3			Techn. Character.		Nicht tolerierte Maß/Free size tolerances	
		Dat.	Name	Maßstab/Scale		AdvancedTCA front board power connector 30 pole, press-fit	
	Detail.	12.06.07	HL.	2:1			
	Insp.	12.06.07	Ko				
	Stand.						
33903	HARTING Electronics GmbH & Co. KG					TB 16 32 030 1101 000	
Mod.	Dat.	Name	D-32339 ESPELKAMP				
						Sub.	