



Chipsmall Limited consists of a professional team with an average of over 10 year of expertise in the distribution of electronic components. Based in Hongkong, we have already established firm and mutual-benefit business relationships with customers from,Europe,America and south Asia,supplying obsolete and hard-to-find components to meet their specific needs.

With the principle of “Quality Parts,Customers Priority,Honest Operation,and Considerate Service”,our business mainly focus on the distribution of electronic components. Line cards we deal with include Microchip,ALPS,ROHM,Xilinx,Pulse,ON,Everlight and Freescale. Main products comprise IC,Modules,Potentiometer,IC Socket,Relay,Connector.Our parts cover such applications as commercial,industrial, and automotives areas.

We are looking forward to setting up business relationship with you and hope to provide you with the best service and solution. Let us make a better world for our industry!



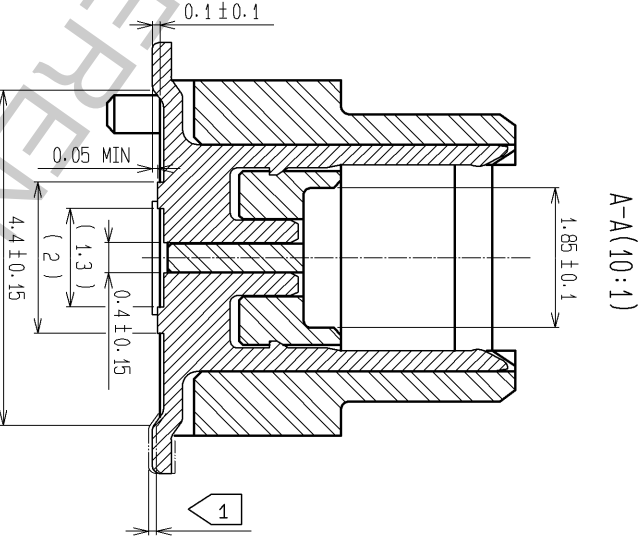
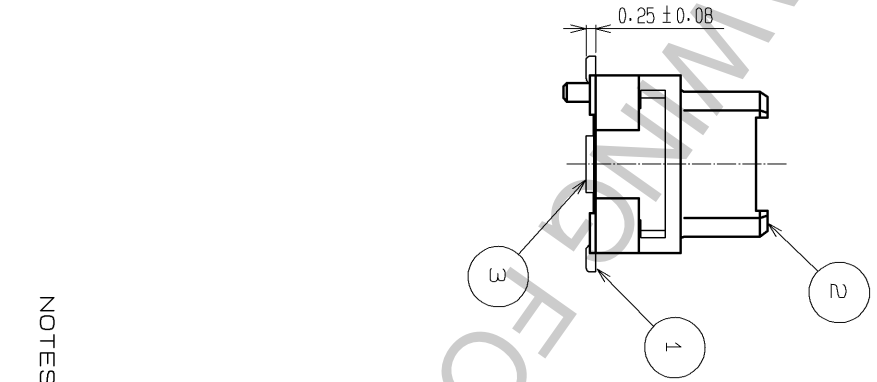
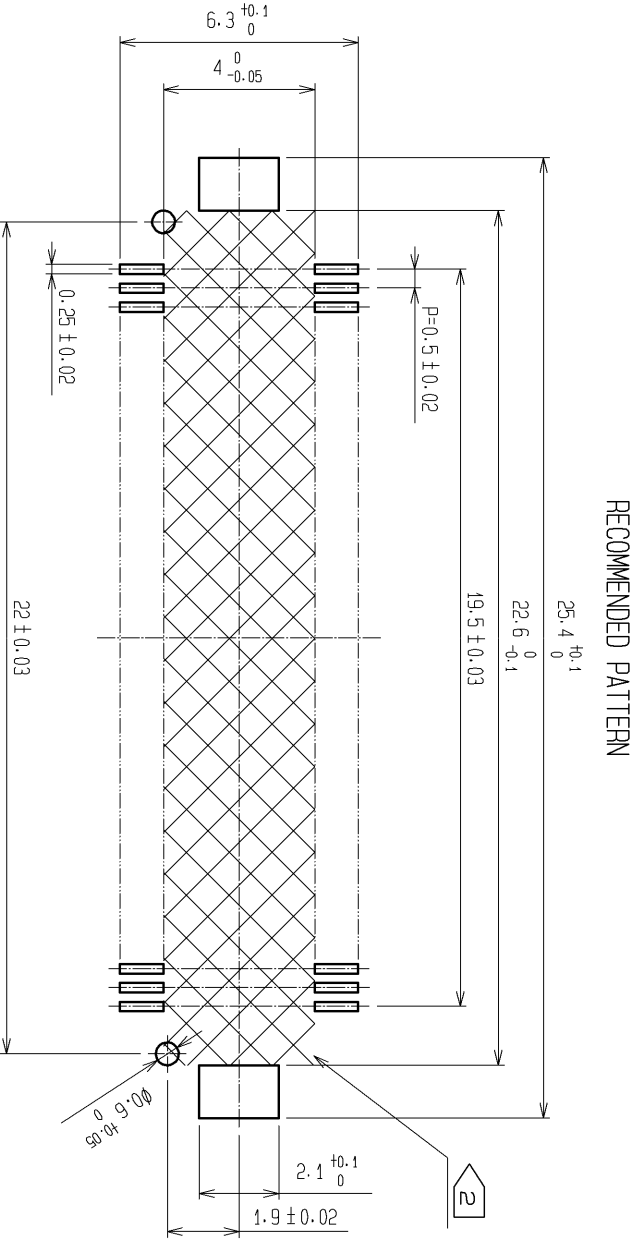
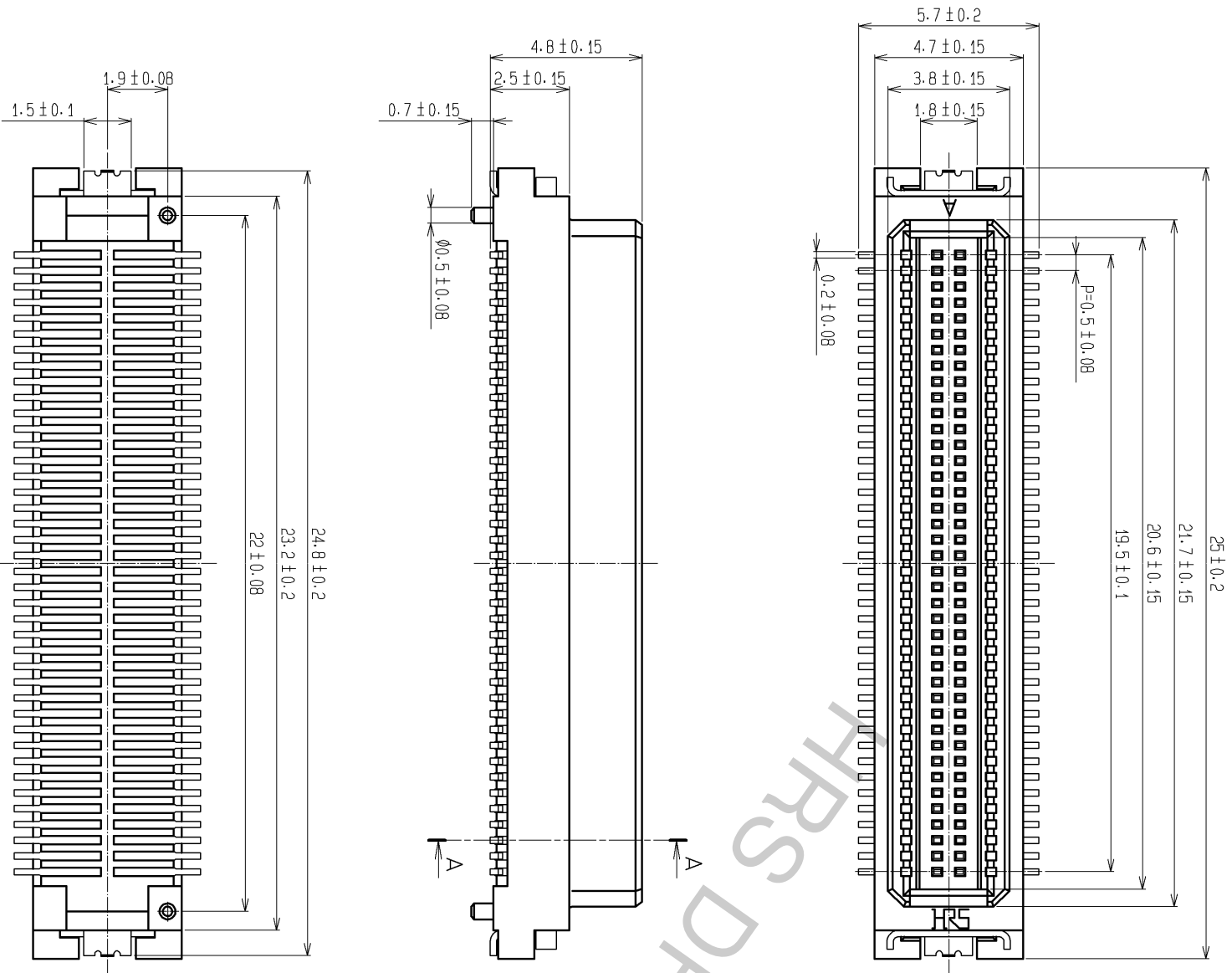
Contact us

Tel: +86-755-8981 8866 Fax: +86-755-8427 6832

Email & Skype: info@chipsmall.com Web: www.chipsmall.com

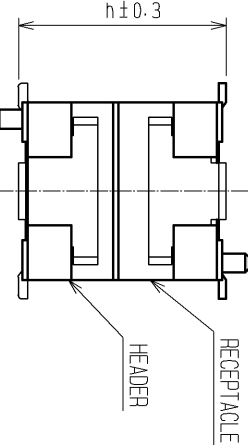
Address: A1208, Overseas Decoration Building, #122 Zhenhua RD., Futian, Shenzhen, China





NOTES 1 LEAD CO-PLANARITY INCLUDE REINFORCED METAL FITTINGS SHALL BE 0.1mm MAX.
2 WHEN A PART MARKED WITH HAS A PATTERN BUT NO RESIST ON IT. TAKE CARE TO PREVENT THE CONNECTOR FROM TOUCHING IT.

MATED HIGHT(h)	RECEPTACLE No.	HEADER No.
DF17(2.5)-80DP-0.5V(57)	DF17#(3.0)-80DS-0.5V(57)	DF17#(4.0)-80DS-0.5V(57)



NO.	MATERIAL	FINISH	REMARKS	NO.	MATERIAL	FINISH	REMARKS
2	POLYAMIDE (PA6T)	WHITE BEIGE	UL94V-0	5	PS	PLASTIC REEL, BLACK	
1	PHOSPHER BRONZE	LEAD AREA: GOLD PLATED 0.1μm min		4	A-PET	CLEAR (COVER TAPE)	
		LEAD AREA: TIN PLATED 1μm min		3	PHOSPHER BRONZE	TIN PLATED 1μm min.	
		UNDER PLATING: NICKEL PLATED 1μm min				UNDER PLATING: NICKEL PLATED 1μm min	

UNITS	SCALE	COUNT	DESCRIPTION OF REVISIONS	DESIGNED	CHECKED	DATE
mm	5 : 1					

APPROVED : KH. IKEDA	08.11.27	DRAWING NO.	EDC3-161802-04
CHECKED : TS. MIYAZAKI	08.11.27	PART NO.	DF17(2.5)-80DP-0.5V(57)
DESIGNED : TY. YAMASAKI	08.11.26	CODE	CL683-0168-5-57
DRAWN : TY. YAMASAKI	08.11.26	NO.	



Technical drawing of a sprocket, showing a top view and a side view.

Top View:

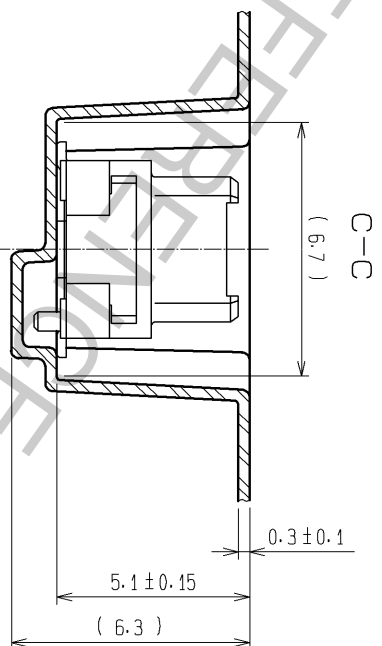
- Overall diameter: $\varnothing 330 \pm 2$
- Inner diameter: $\varnothing 80 \pm 1$
- Number of teeth: 13 (indicated by the number 13 in a circle)
- Label: PART NO. LABEL
- Feature: $\varnothing 1.5$ SPROCKET HOLE FAR SIDE
- Feature: $\varnothing 13 \pm 0.2$


Side View:

- Overall height: 49.5 ± 1
- Inner height: 45.5 ± 0.5

SUPPLIER
- QUANTITY
- PART NO.
- CODE NO.
- DATE OF MANUFACTURED

生産月日	年 月 日
図 番	CL683-016B-5-57
品 名	Df17(2.5)-80DP-0.5V(57)
納入数量	1000 K0
納入者	ヒロセ電機(株)



DRAWING NO.		EDC3-161802-04	
PART NO.	DF17(2.5)-80DP-0.5V(57)		
CODE NO.	CL683-0168-5-57		2/2