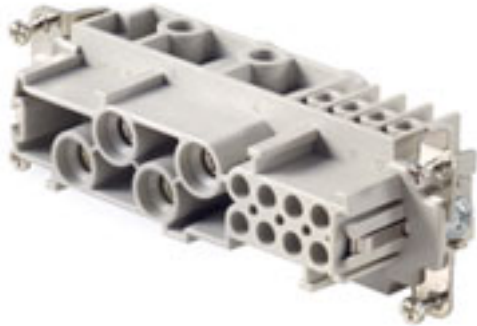


**HDC insert
HDC S4/8 FS**

Weidmüller Interface GmbH & Co. KG
Klingenbergstraße 16
D-32758 Detmold
Germany
Fon: +49 5231 14-0
Fax: +49 5231 14-292083
www.weidmueller.com



The MixMate series of connectors can simultaneously transmit high rated currents and voltages as well as signals.

The wire connection level is designed as a screw element. All screw connections are equipped with a wire protection spring.>br> Screw connection

General ordering data

Order No.	1023250000
Type	HDC S4/8 FS
Version	HDC insert, Female, 400 V, 80 A, No. of poles: 12, Screw connection, Size: 8
GTIN (EAN)	4032248739424
Qty.	1 pc(s).

**HDC insert
HDC S4/8 FS**

Weidmüller Interface GmbH & Co. KG
Klingenbergstraße 16
D-32758 Detmold
Germany
Fon: +49 5231 14-0
Fax: +49 5231 14-292083
www.weidmueller.com

Technical data
Dimensions and weights

Length	111 mm	Width	34 mm
Height	46.2 mm	Net weight	142 g

Dimensions

Height of socket	46.2 mm	Total length base	111 mm
------------------	---------	-------------------	--------

General data

Size	8	Series	MixMate
Rated voltage (DIN EN 61984)	400 V	Rated voltage according to UL/CSA	600 V AC/DC
Rated impulse voltage (DIN EN 61984)	6 kV	Rated current (DIN EN 61984)	80 A
UL 94 flammability rating	V-0	Insulating material group	IIIa
Insulation resistance	10 ¹⁰ Ω	Insulating material	PC glass-fibre reinforced (UL-listed and railway-certified)
No. of poles	12	Plugging cycles, silver	≥ 500
Pollution severity	3	Type	Female

Connection data PE

Stripping length PE connection	13 mm	Wire connection cross-section, finely stranded, min.	0.5 mm ²
Wire connection cross section, finely stranded, max.	16 mm ²	Cross-section for connected conductor, finely stranded with wire-end ferrules and plastic collars DIN 46228/4, rated connection, min.	0.5 mm ²
Wire connection cross-section, finely stranded with wire-end ferrules and plastic collars DIN 46228/4, rated connection, max.	16 mm ²	Wire connection cross section AWG, min.	AWG 16
Wire connection cross section AWG, max.	AWG 6	Wire cross-section, solid, min.	0.5 mm ²
Wire cross-section, solid, max.	16 mm ²	Connection type PE	Screw connection
Tightening torque, min. PE connection	2 Nm	Tightening torque, max. PE connection	2.5 Nm
Rated cross-section	16 mm ²	Fixing screw	M 5
Blade size, crosshead	Gr. PH2	Blade size, slotted (PE connection)	SD 1.2 x 6.5

Rating data

Rated current (DIN EN 61984)	80 A	Rated impulse voltage (DIN EN 61984)	6 kV
Rated voltage (DIN EN 61984)	400 V	Rated voltage according to UL/CSA	600 V AC/DC

Version

Wire connection cross section AWG, min.	AWG 16	Wire connection cross section AWG, max.	AWG 6
Stripping length, rated connection	15 mm	Type of connection	Screw connection
Min. torque for main contact	1.2 Nm	Max. torque for main contact	3 Nm
Size	8	Volume resistance	≤ 1 mΩ
Clamping screw	M 6	Blade size, slotted (screw connection)	SD 0.8 x 4.0
Surface finish	Silver passivated	Material	Copper alloy

**HDC insert
HDC S4/8 FS**

Weidmüller Interface GmbH & Co. KG
 Klingenbergstraße 16
 D-32758 Detmold
 Germany
 Fon: +49 5231 14-0
 Fax: +49 5231 14-292083
 www.weidmueller.com

Technical data

Classifications

ETIM 3.0	EC002413	UNSPSC	30-21-18-01
eClass 6.2	27-26-12-90	eClass 7.1	27-44-02-90

Product information

Descriptive text ordering data	The signal contacts are designed for a rated voltage of 400V and a rated current of 16A.
Descriptive text accessories	Accessories, see chapter J - Tools, see chapter K

Approvals

Approvals



ROHS	Conform
------	---------

Data sheet...

**HDC insert
HDC S4/8 FS**

Weidmüller Interface GmbH & Co. KG
Klingenbergstraße 16
D-32758 Detmold
Germany
Fon: +49 5231 14-0
Fax: +49 5231 14-292083
www.weidmueller.com

Drawings

