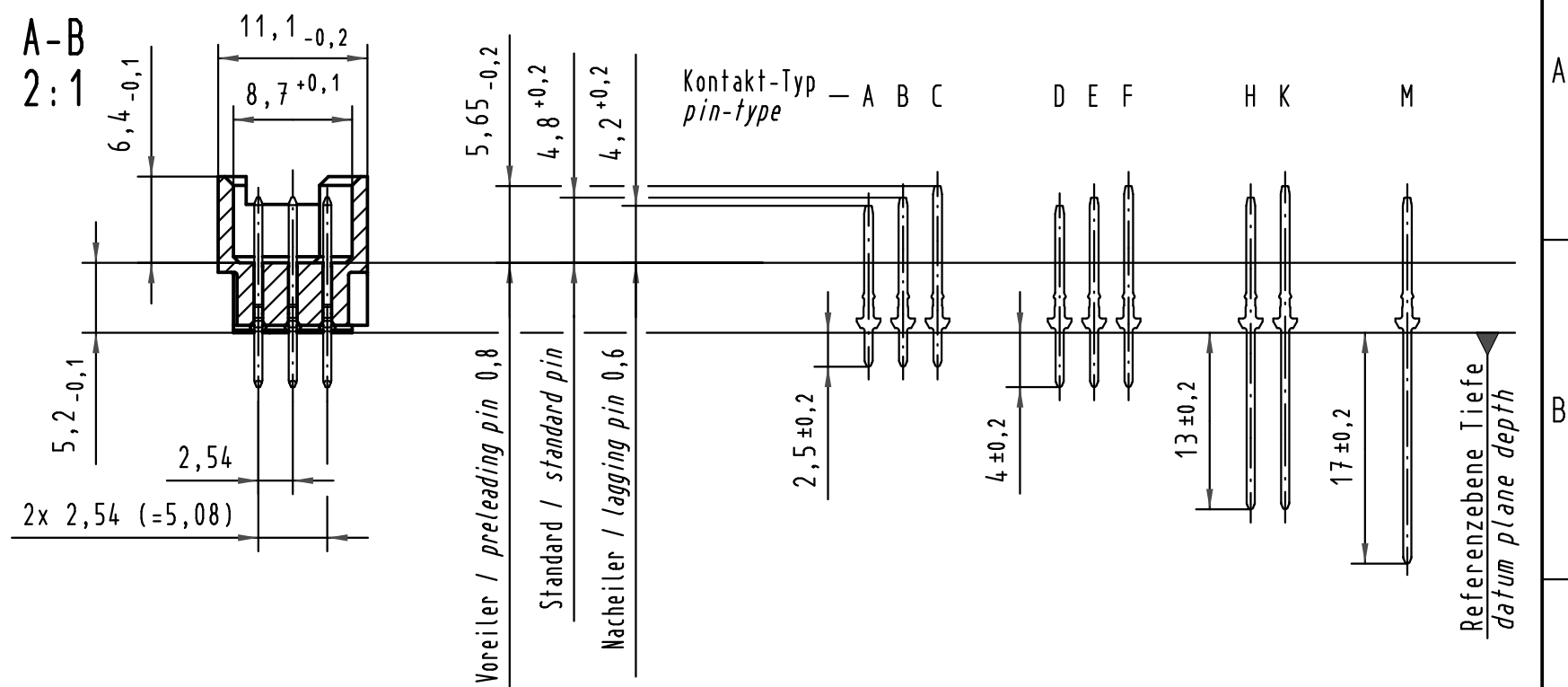
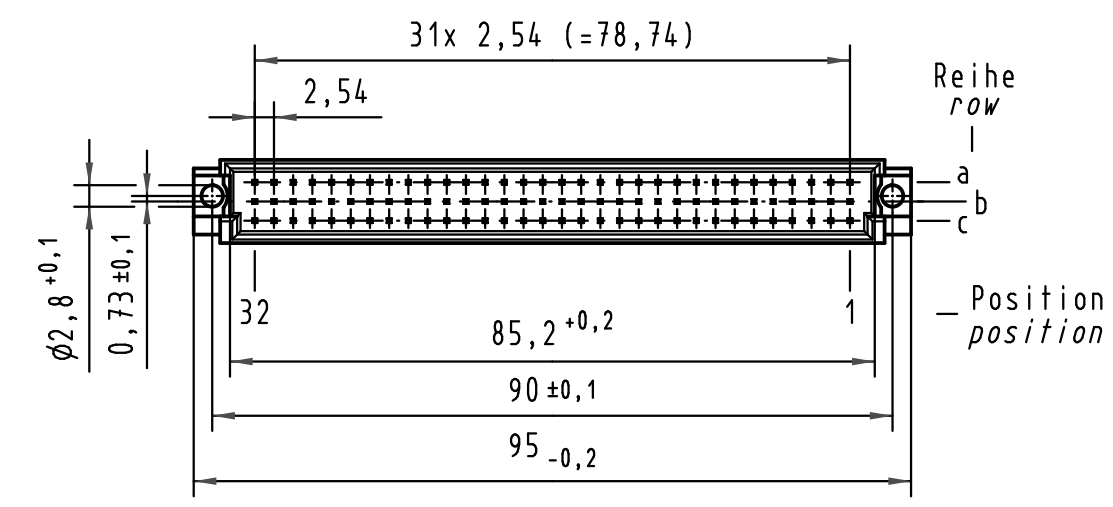
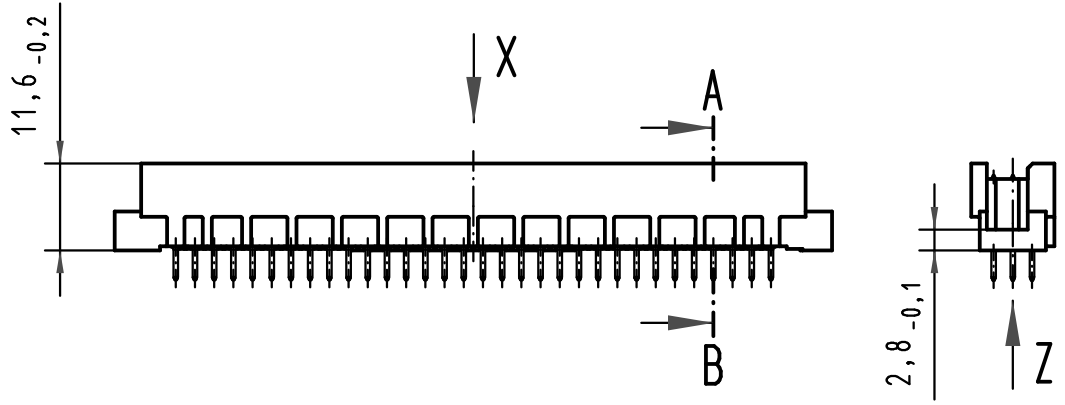
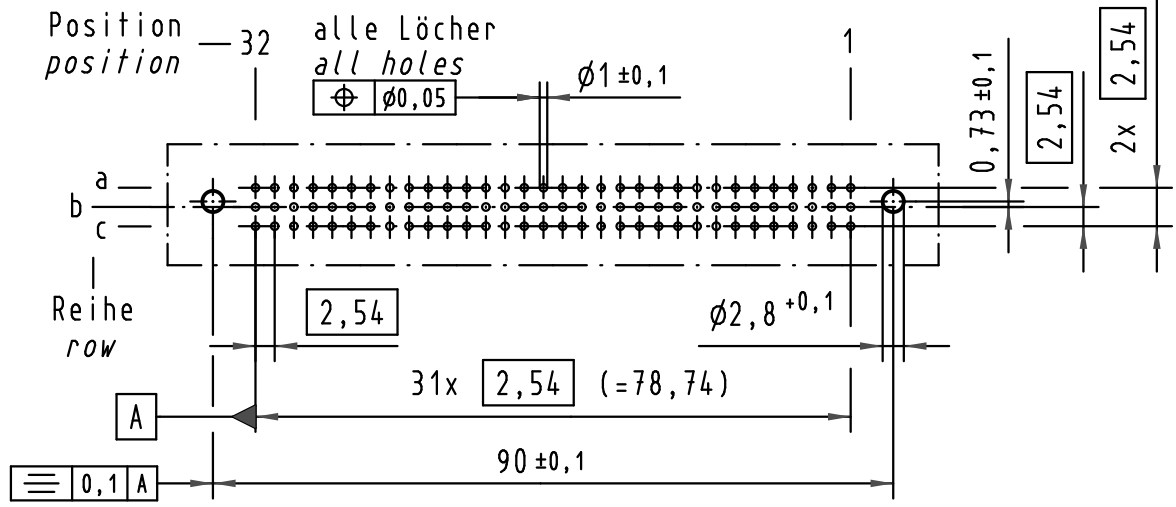
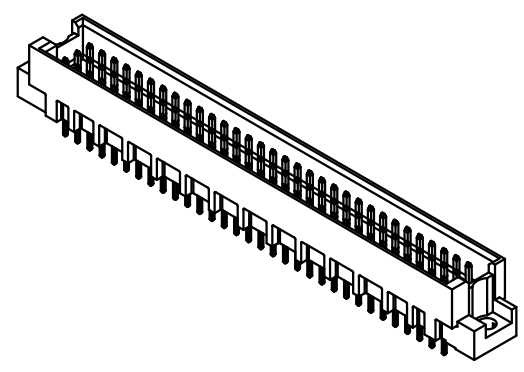
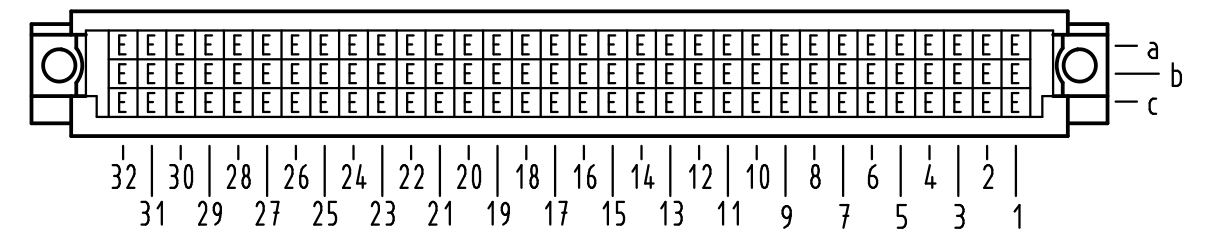


Alle Rechte vorbehalten/ All rights reserved

**X**  
(Lochbild)  
(board drillings)



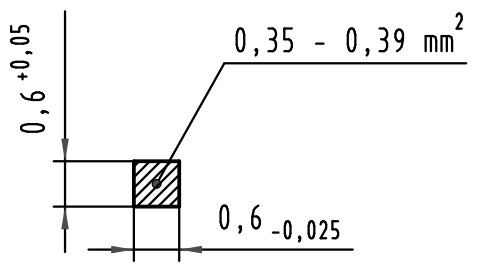
**X** Kontaktbelegung  
contact loading



09 79 196 6903	2	Au flash over PdNi over Ni
Bestell-Nr. part-no.	Anforderungsstufe nach IEC performance level acc. to IEC	Kontaktoberfläche contact plating

**Z**  
10:1

Querschnitt der Lötanschlüsse:  
cross-section of solder terminations:



All Dimensions in mm Original Size DIN A 3			Techn. Character.			Nicht tolerierte Maße/Free size tolerances IEC 60603-2		
						Bauform RL Messerleiste Einlötl 4,0 , 96pol. type RL male connector solder 4,0 , 96pol.		
			Detail.	15.03.01	Rie.	Maßstab/Scale 1:1 2:1 10:1	TB 09 79 196 x903	
		Insp.	15.03.01	Pa.				
35548	23.07.09	hsv	Stand.					
34650	21.01.08	Hage.	HARTING Electronics GmbH & Co. KG D-32339 ESPELKAMP				Blatt/ page	
29420							Sub.	
Mod.	Dat.	Name						