



Chipsmall Limited consists of a professional team with an average of over 10 year of expertise in the distribution of electronic components. Based in Hongkong, we have already established firm and mutual-benefit business relationships with customers from,Europe,America and south Asia,supplying obsolete and hard-to-find components to meet their specific needs.

With the principle of “Quality Parts,Customers Priority,Honest Operation,and Considerate Service”,our business mainly focus on the distribution of electronic components. Line cards we deal with include Microchip,ALPS,ROHM,Xilinx,Pulse,ON,Everlight and Freescale. Main products comprise IC,Modules,Potentiometer,IC Socket,Relay,Connector.Our parts cover such applications as commercial,industrial, and automotives areas.

We are looking forward to setting up business relationship with you and hope to provide you with the best service and solution. Let us make a better world for our industry!



Contact us

Tel: +86-755-8981 8866 Fax: +86-755-8427 6832

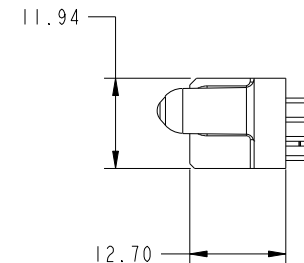
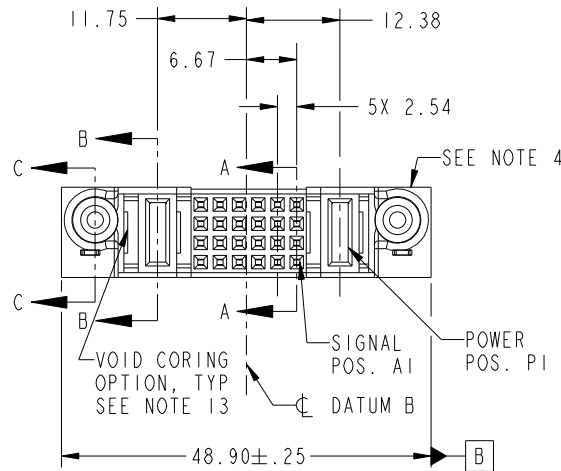
Email & Skype: info@chipsmall.com Web: www.chipsmall.com

Address: A1208, Overseas Decoration Building, #122 Zhenhua RD., Futian, Shenzhen, China



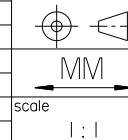


PRODUCT NO.	ROWS	PWR		SIGNAL						PWR	
		E2	P2	6	5	4	3	2	1	P1	E1
51940-030- NOTE: 3	D C B A			E	E	E	E	E	E	P	



CODE	DIM "M" MATING LENGTH	CONTACT TYPE
E	[N/A]	SIGNAL
PA	[1.07]	POWER
PD	[2.34]	POWER
HA	[N/A]	HOLD-DOWN

mat'l code				SEE NOTE		tolerances unless otherwise specified		CUSTOMER		FCI	
ltr	ecn no.	dr	date	linear	angles	linear	angles	COPY	projection	title	www.fciconnect.com
A	V03-0081	TAB	01/17/03			0.X ±0.5				IP + 24S + IP	
B	V03-1171	TAB	10/30/03			0.XX ±0.25				VERTICAL SOLDER RECEPT	
C	V04-1118	TAB	11/16/04			0.XXX ±0.10					
D	DG05-0418	CS	11/16/05	dr		0° ±2°					
E	DG05-0508	CS	11/28/05	enr							
F	DG07-0498	JW	09/12/08	chr							
				appd							
sheet	revision	F	F	F	F						
index	sheet	1	2	3	4						



scale 1:1

product family PwrBlade
size dwg no
A 51940-030

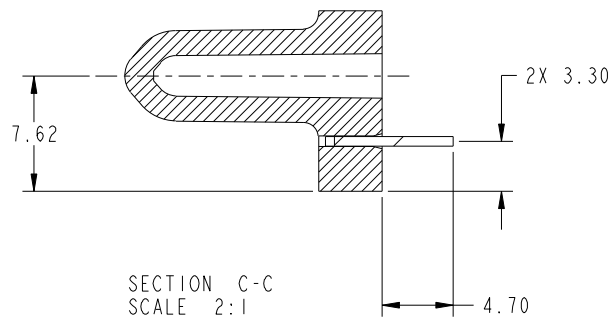
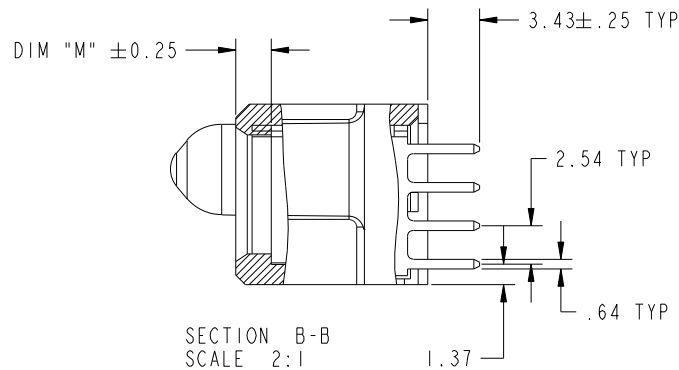
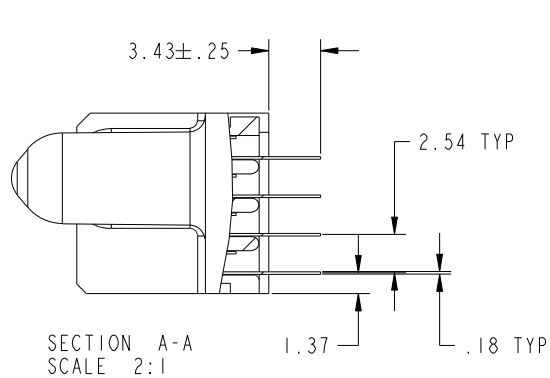
code 213
sheet 1 of 4

B

B

PRODUCT NUMBER

51940-030--
NOTE: 3



mat'l code				SSEE NOTE		tolerances unless otherwise specified		CUSTOMER		FCI			
lir	ecn no.	dr	date					COPY		www.fciconnect.com			
F						linear	0.X ± 0.5	projection		title IP + 24S + IP VERTICAL SOLDER RECEPT			
							0.XX ± 0.25						
						angles	0.XXX ± 0.10						
							0° ± 2°			product family PwrBlade			
				dr	T. BRUNGARD	01/17/03		MM		size	dwg no	213	code
				enrg	M. MOSTOLLER	01/17/03		scale		A	51940-030	sheet	
				chr	M. MOSTOLLER	01/17/03		1:1				2	
				appd	M. MOSTOLLER	01/17/03							
sheet index	revision sheet												

A

A

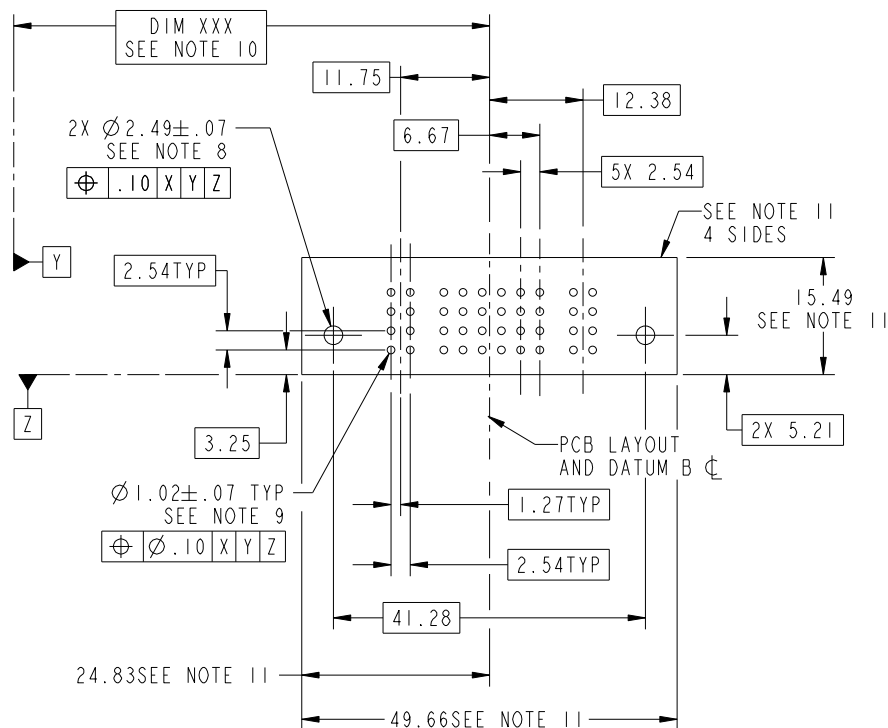
B

B



PRODUCT NUMBER

51940-030--
NOTE: 3



mat'l code				SEE NOTE		tolerances unless otherwise specified		CUSTOMER		FCI			
ltr	ecn no.	dr	date					COPY		www.fciconnect.com			
F				linear		0.X ± 0.5		projection		title IP + 24S + IP VERTICAL SOLDER RECEPT			
						0.XX ± 0.25							
				angles		0.XXX ± 0.10							
						0° ± 2°				product family PwrBlade			
				dr	T. BRUNGARD	01/17/03		MM		size	dwg no	213	code
				enrg	M. MOSTOLLER	01/17/03		scale		A	51940-030	sheet	3
				chr	M. MOSTOLLER	01/17/03		1:1					
				appd	M. MOSTOLLER	01/17/03							
sheet index	revision sheet												

PRODUCT NUMBER

51940-030--
NOTE: 3

NOTES:

1. DIMENSIONS AND TOLERANCES ARE IN ACCORDANCE WITH
ASME Y14.5M, 1994 UNLESS OTHERWISE SPECIFIED.

CONNECTOR NOTES:

2 HOUSING MATERIAL: UL 94 V-0 GLASS FILLED
HIGH-TEMP THERMOPLASTIC
POWER CONTACT MATERIAL: COPPER ALLOY
SIGNAL PIN MATERIAL: COPPER ALLOY

3. PLATING:
SEE ITEM 586 IN PRINT 10064183 FOR PLATING SPEC OF 51940-030; 51940-030LF PRESPECTIVELY

4 MANUFACTURER'S NAME, P/N, AND DATE CODE TO APPEAR ON
THIS SURFACE.

5. PRODUCT SPECIFICATION GS-12-149.
APPLICATION SPECIFICATION BUS-20-067.

6. PACKAGED IN TRAYS.

PCB NOTES:

7. ALL HOLE DIAMETERS ARE FINISHED HOLE SIZE.

8 MOUNTING HOLES, WHERE APPLICABLE, ARE UNPLATED.

9 $\varnothing 1.151 \pm 0.025$ DRILLED HOLES PLATED WITH
0.008 MIN SnPb OR Sn OVER 0.03
TO 0.08 Cu PLATING TO ACHIEVE
 $\varnothing 1.02 \pm .07$ HOLE.

10 "DIM XXX" TO BE DETERMINED BY THE CUSTOMER.

11 CONNECTOR KEEP-OUT ZONE.

12 A Δ SYMBOL WILL BE NEXT TO ANY DIMENSION,
VIEW, OR NOTE WHICH HAS BEEN MODIFIED WITH
THE CURRENT DRAWING REVISION.

13. THE VOID CORING IN BETWEEN POWER MODULES, SIGNAL
MODULES AND END MODULES ARE OPTIONAL AND THE SHAPE
MAY BE DIFFERENT FOR OPTIMIZING THE MOLDING PROCESS.
THE VOID CORING WILL NOT EFFECT TO PRODUCT FUNCTION.

mat'l code				SEE NOTE				tolerances unless otherwise specified				CUSTOMER				<div>FCI</div> <div>www.fciconnect.com</div>			
ltr	ecn no.		dr	date	linear	0.X ± 0.5				COPY				title IP + 24S + IP VERTICAL SOLDER RECEPT					
F						0.XX ± 0.25				projection									
						0.XXX ± 0.10													
					angles	0° $\pm 2^\circ$													
					dr	T. BRUNGARD		01/17/03		MM				product family		PwrBlade		code	
					enrg	M. MOSTOLLER		01/17/03						size	dwg no		213		
					chr	M. MOSTOLLER		01/17/03		scale				A	51940-030		sheet		
					appd	M. MOSTOLLER		01/17/03		1:1							4		
sheet index		revision sheet																	

A

A

B

B